

T/ERRA V/VA

DARGLOBAL

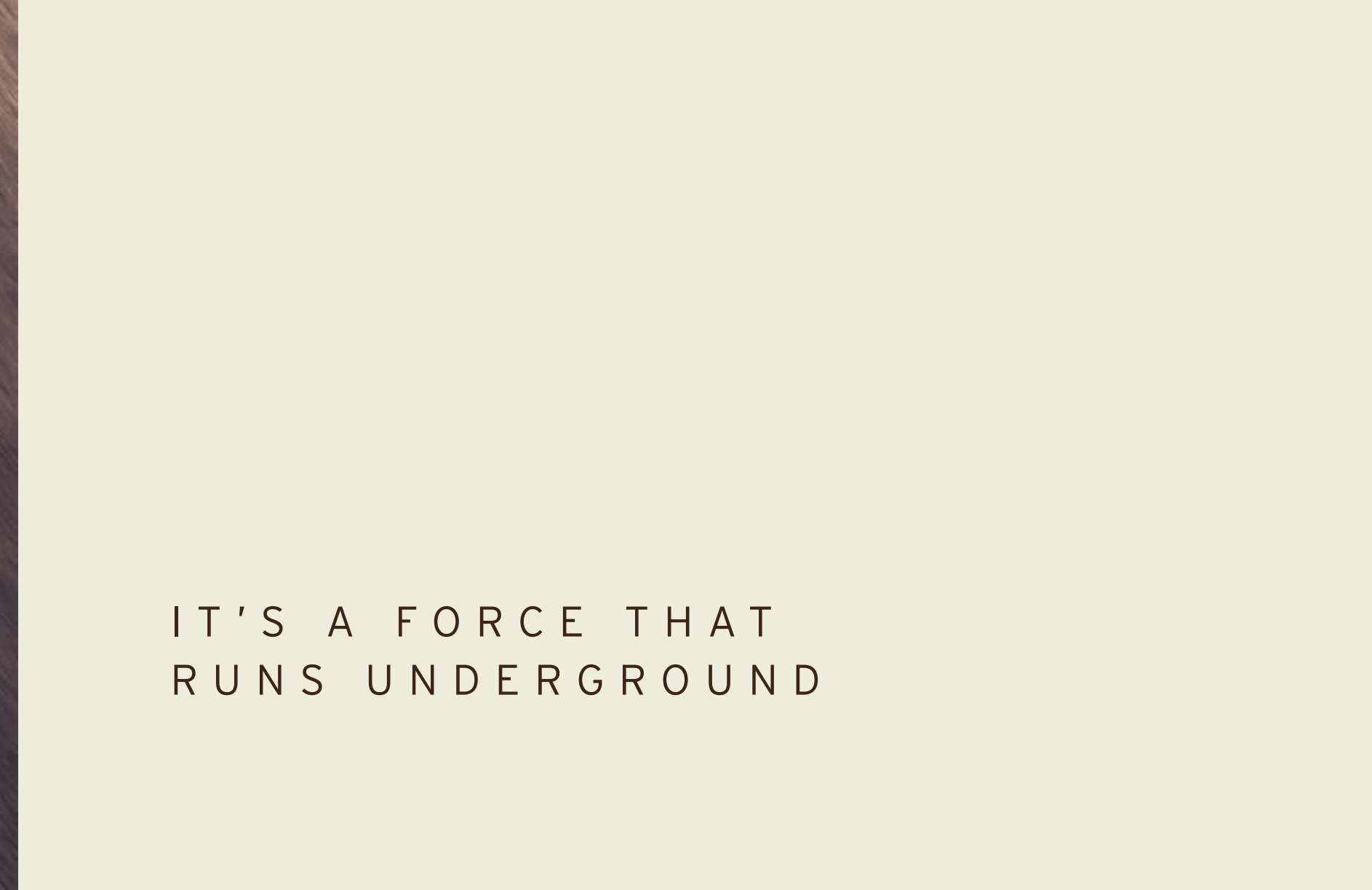


DESIGN INSPIRED BY  
AUTOMOBILI LAMBORGHINI





YOU CAN FEEL IT  
UNDER YOUR FEET



IT'S A FORCE THAT  
RUNS UNDERGROUND

Disclaimer: All pictures, plans, layouts, information, data and details included in this brochure are indicative only and may change at any time up to the final 'as built' status in accordance with final designs of the project, regulatory approvals and planning permissions. All accessories and interior finishes such as wallpaper, chandeliers, furniture, electronics, white goods, curtains, hard and soft landscaping, pavements, features, gym, and other elements displayed in the brochure, or between the plot boundary, are not part of the unit and are shown for illustrative purposes only.







DARGLOBAL



## T/ERRA V/IVA

MAGNETIC  
ATTRACTION

A powerful territory and an icon of energy. When they come together, the supernatural happens. The land shakes, the land becomes alive. Tierra Viva Benahavís – Costa Del Sol, is an exclusive residential community of luxury villas, with design inspired by Automobili Lamborghini.

An architectural prodigy brought to life by DarGlobal, debuting for the first time in Spain.





## THE MYTH

Founded in 1963, Automobili Lamborghini is the epitome of luxury super sports cars made of innovative technology and futuristic lines. An Italian excellence that is still based in Sant'Agata Bolognese where it all started.

The true essence of Lamborghini DNA is represented in this futuristic and elegant architectural project complemented with interiors inspired by the super sports car design, thanks to incomparable craftsmanship and passion.

DARGLOBAL







DARGLOBAL



## COSTA DEL SOL

Exclusive yet relaxed.  
Fashionable yet characteristic.  
Connected yet nested.  
Costa Del Sol has it all.

Costa del Sol offers a gentle  
mild climate all year long,  
with proximity to all the  
main destinations in Spain  
and Europe thanks to  
high-speed trains and an  
international airport nearby.



Vibrant and attractive, Costa Del Sol hosts tons of stylish clubs, restaurants and hotels, as well as shopping areas, exclusive marinas and breathtaking beaches.





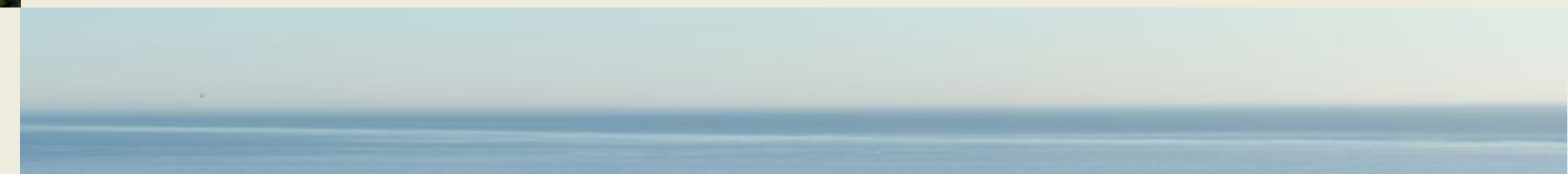


DARGLOBAL



## BENAHAVÍS

Benahavís ranks as one of the wealthiest municipalities in Spain thanks to the luxurious golf clubs and resorts that surround the area. In recent years, it has emerged as one of the most desirable locations on Costa del Sol to buy property, in a natural haven of peace and beauty within easy reach of Marbella.





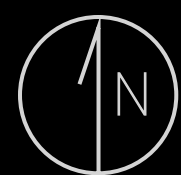
## GENIUS LOCI

The Ancient Romans believed some places had divine qualities, Tierra Viva is one of them. Nestled on divine hills outside Los Jaralillos, in the exclusive area of Benahavís, the property is located just 8 minutes away from Marbella and 5 minutes from the shores.

With 12 golf clubs, charming Andalusian villages and the stylish Puerto Banús in the surroundings, Tierra Viva offers a peaceful retreat in the middle of a vibrant community.







# COSTA DEL SOL

DARGLOBAL



La Zagaleta

Marbella Club  
Golf Resort

**BENAHAVIS**

**TIERRA VIVA**

**MARBELLA**

Marbella Club  
Golden Mile

Nobu Hotel  
Marbella

Puerto Banús

Anantara Villa  
Padierna Palace



SPAIN

- 05 MIN MEDITERRANEAN SHORES
- 12 MIN PUERTO BANÚS
- 16 MIN MARBELLA CLUB GOLDEN MILE
- 18 MIN NOBU HOTEL MARBELLA
- 40 MIN GIBRALTAR
- 45 MIN MÁLAGA-COSTA DEL SOL AIRPORT



T/ERRA V/VA

## PROMINENT POSITION

Tierra Viva is a luxury residential complex of 53 unique villas sitting gently on the side of a hill, with every villa standing on a different height.

DARGLOBAL







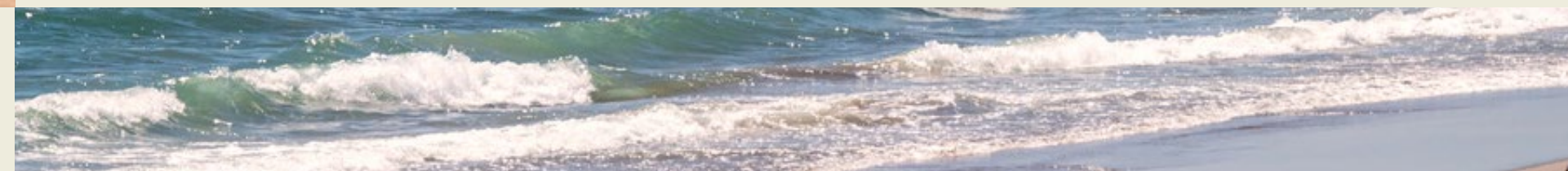
DARGLOBAL



## MEDITERRANEAN IN THE EYES

The prestigious position of Tierra Viva overlooking the coastline, allows every villa to enjoy endless panoramas of the Mediterranean Sea.

A soothing vision for the soul.





A PLETHORA OF  
HIGH-END AMENITIES  
FEW MINUTES AWAY

Descending from Tierra Viva is Puerto Banús, where a luxurious offering of designer boutiques, sport cars parading, exclusive nightclubs, and fine dining experiences populate the picturesque waterfront.

## T/ERRA V/IVA





T/ERRA V/VA

DARGLOBAL



*Views of Marbella and the Costa Del Sol, as seen from the vantage point of Tierra Viva.*



T/ERRA V/VA

DARGLOBAL





DARGLOBAL







## HIDDEN TREASURES

Sharp lines and finest materials are the unique traits of the luxury villas in Tierra Viva. As supernatural gems coming out of the land itself, they are named after the most precious stones.



DIAMANTE VILLA  
(6-BEDROOMS)



ZAFIRO VILLAS  
(5-BEDROOMS)



ESMERALDA VILLAS  
(4-BEDROOMS)



DARGLOBAL



DIAMANTE VILLA

T/ERRA V/VA



# DIAMANTE VILLA

Majestic and superb, the Diamante Villas is spread on four levels, host 6 bedrooms and know no compromises.

Spacious roof terraces with breath-taking Mediterranean Views are the perfect set for family and social gatherings, while the extensive swimming pool and luxuriant gardens make this villas the perfect setting for an unforgettable holiday that can last for a lifetime.





T/ERRA V/VA

/ DIAMANTE VILLA

DARGLOBAL





T/ERRA V/VA

/ DIAMANTE VILLA

DARGLOBAL





T/ERRA V/VA

/ DIAMANTE VILLA

DARGLOBAL





T/ERRA V/VA

/ DIAMANTE VILLA

DARGLOBAL





DARGLOBAL



ZAFIRO VILLAS

T/ERRA V/VA





# ZAFIRO VILLAS

Refined, classy and sophisticated, the 4-level Zafiro Villas sit gently on the hillside, offering stunning views from every room, especially from the panoramic rooftop. With 5 bedrooms and plenty of common spaces, they feature a wine cellar, a multipurpose room that can easily become a gym and a massive pool area for unforgettable memories.





T/ERRA V/VA

/ ZAFIRO VILLAS

DARGLOBAL





T/ERRA V/VA

/ ZAFIRO VILLAS

Iconic, grand, full of light. Inside the Zafiro Villas everything is sophisticated. Tailor-made finishings and high-end materials enhance the generous open-spaces, for a sublime living experience.



DARGLOBAL





T/ERRA V/VA

/ ZAFIRO VILLAS

DARGLOBAL





T/ERRA V/VA

/ ZAFIRO VILLAS

DARGLOBAL





DARGLOBAL



ESMERALDA VILLAS

T/ERRA V/IVA



# ESMERALDA VILLAS

Every day is a summer day in the Esmeralda Villas, the 4-bedroom residences with glorious terraced gardens and exclusive pool areas.

Here, everything was created to offer the most relaxing and unwinding experience, like the steam & sauna rooms and the home theatre in the basement floor.





T/ERRA V/VA

/ ESMERALDA VILLAS

DARGLOBAL





T/ERRA V/VA

/ ESMERALDA VILLAS

DARGLOBAL





T/ERRA V/VA

/ ESMERALDA VILLAS

DARGLOBAL





T/ERRA V/VA

/ ESMERALDA VILLAS

DARGLOBAL





T/ERRA V/VA

/ ESMERALDA VILLAS

DARGLOBAL





T/ERRA V/VA

/ ESMERALDA VILLAS

DARGLOBAL







## FEATURES, SPECIFICATIONS & FLOOR PLANS

### DISCLAIMER

All pictures, plans, layouts, information, data and details included in this brochure are indicative only and may change at any time up to the final 'as built' status in accordance with final designs of the project, regulatory approvals and planning permissions. All accessories and interior finishes such as wallpaper, chandeliers, furniture, electronics, white goods, curtains, hard and soft landscaping, pavements, features, gym, and other elements displayed in the brochure, or between the plot boundary, are not part of the unit and are shown for illustrative purposes only.





# AN EXCLUSIVE COMMUNITY WITH 24/7 PREMIUM SECURITY

/ Located within the gated community of Los Jaralillos - Benahavís, Tierra Viva prides itself on providing a private and secure environment for its residents with premium 24/7 security services.

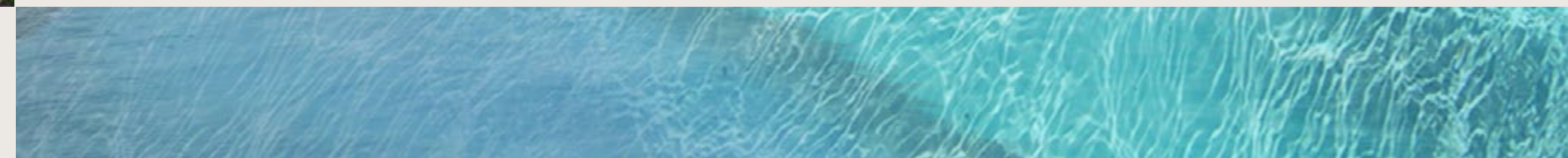






## PERSONAL PARADISE

/ Each villa within Tierra Viva comes with its own private pool, offering a chance to create a personal oasis for serene moments and unforgettable memories.





# TIERRA VIVA MASTERPLAN

-  DIAMANTE VILLA  
6-bedrooms
-  ZAFIRO VILLAS  
5-bedrooms
-  ESMERALDA VILLAS  
4-bedrooms



GOLF VIEWS

SEA VIEWS ↘







## SPECIFICATIONS

All villas come with a reinforced concrete structure. External walls are made of double layer engineered bricks and thermal insulation. The villas have double glazed windows, cooling and heating system, leveled and graded outdoor spaces, concrete pavers on driveway and parking.

Each villa features an exquisite pool and crafted hardscape.

Note: The villas are not furnished nor softscaping is provided.

### VILLA

#### INTERNAL CLADDING

- Vertical and horizontal finishes with premium quality emulsion paint, colour to be defined for walls and ceilings.
- Suspended ceiling in gypsum for the dry areas and waterproof plasterboard for the wet areas.

#### EXTERNAL CLADDING

- Waterproof render with emulsion paint from top quality Brand. colour to be defined.
- Stone cladding from first quality for external walls, where applicable.

#### FLOORING AND TILING

- Marble first quality, in big format for kitchen, living, dining, hall and common areas of the ground floor.
- Porcelain floor tiling, in big format, from top brand such as COSENTINO, PORCELANOSA, PERONDA, INALCO or similar for bathrooms, wet rooms, bedrooms and service areas.
- For external areas, same tiling in anti-slip version will be provided.

### BATHROOMS

#### FLOORING AND TILING

- Porcelain floor tiling, in big format, from top brand such as COSENTINO, PORCELANOSA, PERONDA, INALCO or similar for bathrooms, wet rooms, bedrooms and service areas.
- Porcelain tiling in big format, from top brand such as COSENTINO, PORCELANOSA, PERONDA, INALCO, or similar, in marble effect look finish.

#### SANITARY WARE, FAUCETS AND ACCESSORIES

- Suspended built-in toilet, from GEBERIT, KOHLER or similar brand, with soft-closing system.
- Countertop in "Solid Surface" for secondary bathrooms and porcelain for main bathroom, from DURAVIT, COSENTINO, INALCO or similar. In master bathroom, double basin with wooden lacquered cabinet, colour to be defined.
- Basins from DURAVIT, KOHLER, or similar brand.
- Shower tray from top quality brand such as COSENTINO, PORCELANOSA, KOHLER or similar brand.
- Single lever mixer for wash hand basin from HANSGROHE AXOR, GESSI, KOHLER or similar brand.
- Thermostatic mixer for shower with built-in over head rain shower from HANSGROHE AXOR, GESSI, or similar brand.
- Mirror with LED back light and anti-fog system, for bathrooms.
- Security glass shower screen.





## SPECIFICATIONS

### KITCHEN

#### CABINETS AND WORKTOPS

- Main kitchen branded by top supplier such as GUNNI&TRENTINO, BULTHAUP or similar, with worktop and back splash made by porcelain surface from COSENTINO, PORCELANOSA, INALCO, or similar brand.
- Service kitchen with top quality wooden cabinets, with high capacity, colour to be confirmed, with SILESTONE by COSENTINO or similar brand worktop.

#### APPLIANCES

- Appliances from MIELE, GAGGENAU or similar Brand for main kitchen.
- Appliances from SIEMENS, BOSCH or similar Brand for service kitchen.
- Main and service kitchen fully fitted with fridge, freezer, hob, oven, dishwasher and built-in extractor.

### SPA & STEAM ROOM

#### FLOORING AND TILING

- Porcelain floor tiling, with marble look, in big format, from top brand such as COSENTINO, MARAZZI, PORCELANOSA, PERONDA, INALCO, or similar brand.
- Porcelain tiling in big format with marble look, from top brand such as COSENTINO, MARAZZI, PORCELANOSA, PERONDA, INALCO, or similar, brand.

### LAUNDRY

#### CABINETS AND WORKTOPS

- Laundry branded by top suppliers such as GUNNI&TRENTINO, BULTHAUP or similar.
- Silestone worktop from COSENTINO or similar brand.

#### APPLIANCES

- Appliances from SIEMENS, BOSCH or similar brand for laundry.
- Fitted laundry with washing machine and tumble dryer.

### INTERNAL CARPENTRY

- Security main entrance door veneered in wood with pivot system.
- Interior doors and wardrobe fronts finished in wood, with hidden hinges.
- Interior of wardrobes fully fitted according to project specifications.

### EXTERNAL CARPENTRY

- Top quality Brand aluminium profile system, from, CORTIZO, TECHNAL or similar brand, colour to be defined, with thermal bridge break.
- Security double CLIMALITE glazing, with thermal and sun protection according to the orientation.

### FACILITIES

#### AIR CONDITIONING AND HEATING

- Individual air conditioning system (heating&cooling) for every room, from top supplier such LG, DAIKING or similar brand.
- Underfloor heating in ground floor and first floor, electrical for bathrooms and water system for the rest of the rooms.

#### ELECTRICITY & TELECOMMUNICATION & DOMOTICS

- Top quality mechanisms from NIESSEN, GIRA, or similar brand.
- LED lighting with intensity regulation (dimnable) for living, kitchen and bedrooms.
- Sockets with USB charger in bedrooms and kitchen.
- House domotic control for:
  - Heat & Cool system
  - Lighting system
  - Gates





# DIAMANTE VILLA

6 - BED

SQM 1,254 - 1,450

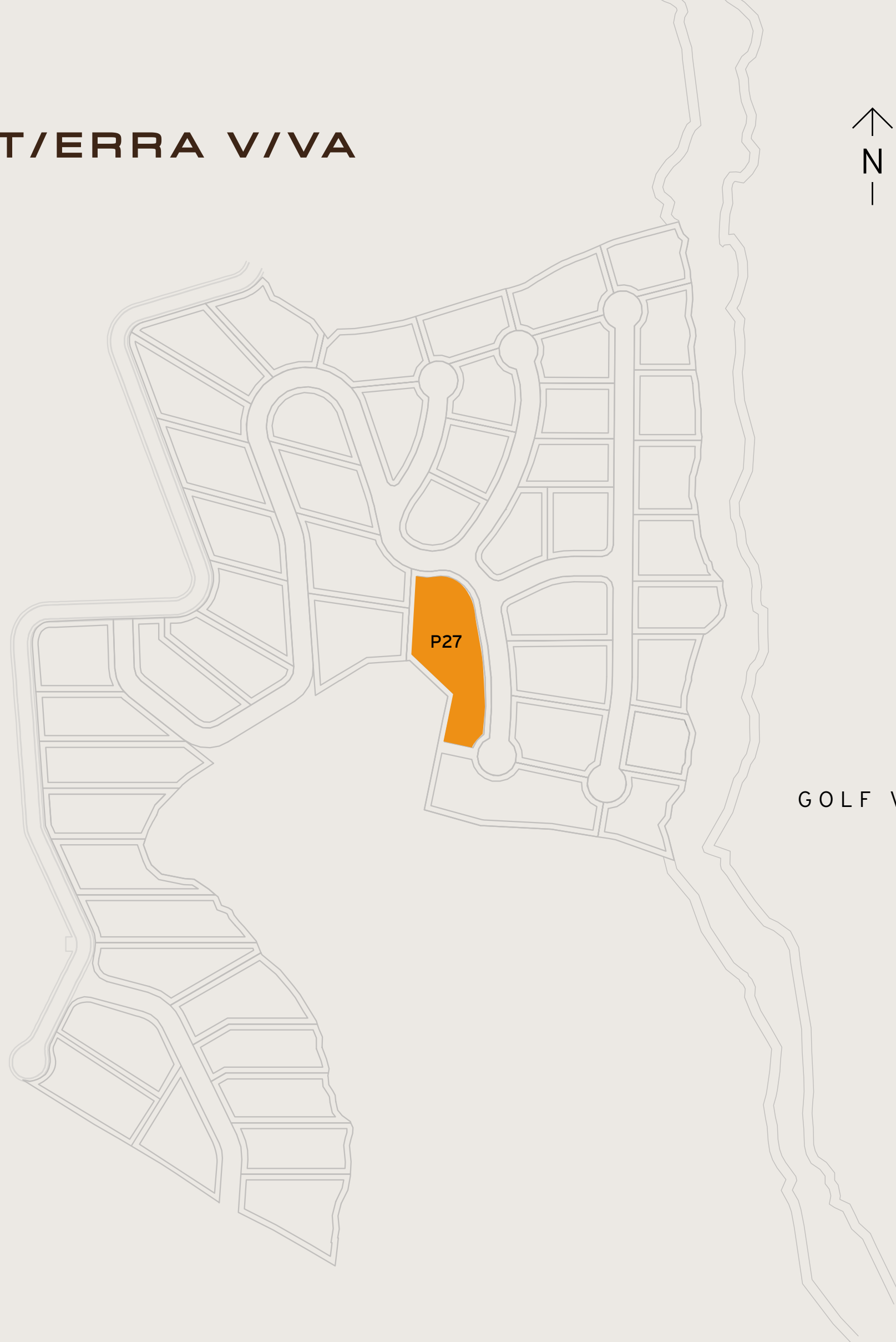
SQFT 13,498 - 15,608

**Disclaimer:** All pictures, plans, layouts, information, data and details included in this brochure are indicative only and may change at any time up to the final 'as built' status in accordance with final designs of the project, regulatory approvals and planning permissions. All accessories and interior finishes such as wallpaper, chandeliers, furniture, electronics, white goods, curtains, hard and soft landscaping, pavements, features, gym, and other elements displayed in the brochure, or between the plot boundary, are not part of the unit and are shown for illustrative purposes only.

PLOT SIZE / SQM 2,476 - 2,881

SQFT 26,651 - 31,011

Including total indoor & outdoor built up area.



GOLF VIEWS

SEA VIEWS







# DIAMANTE VILLA

6 - BED

**SQM**  
1,254 - 1,450

**SQFT**  
13,498 - 15,608

**PLOT SIZE**

**SQM** 2,476 - 2,881

**SQFT** 26,651 - 31,011

*Including total indoor & outdoor built up area.*



**BASEMENT**

**Disclaimer:** All pictures, plans, layouts, information, data and details included in this brochure are indicative only and may change at any time up to the final 'as built' status in accordance with final designs of the project, regulatory approvals and planning permissions. All accessories and interior finishes such as wallpaper, chandeliers, furniture, electronics, white goods, curtains, hard and soft landscaping, pavements, features, gym, and other elements displayed in the brochure, or between the plot boundary, are not part of the unit and are shown for illustrative purposes only.







# DIAMANTE VILLA

6 - BED

**SQM**  
1,254 - 1,450

**SQFT**  
13,498 - 15,608

**PLOT SIZE**

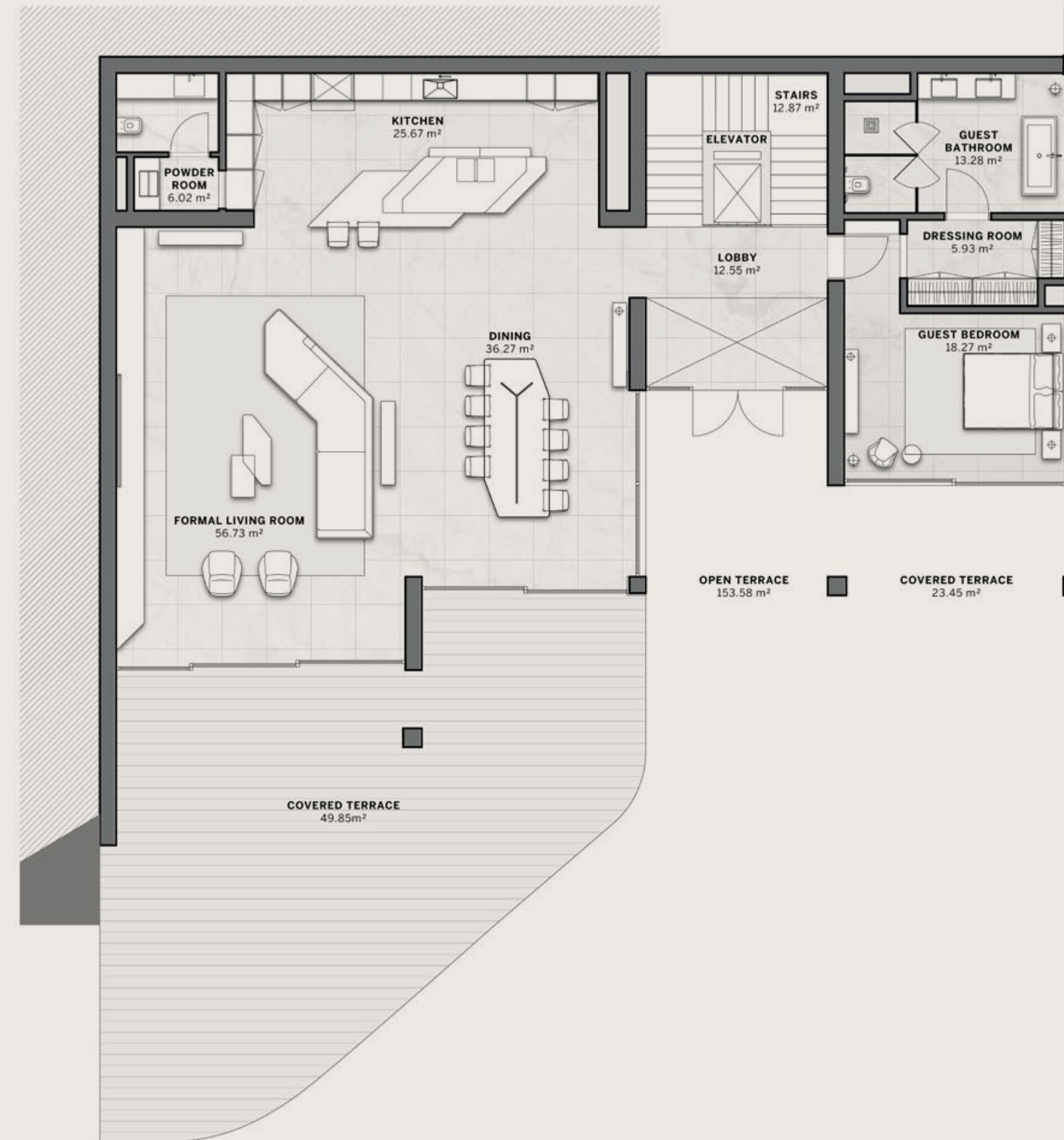
**SQM** 2,476 - 2,881

**SQFT** 26,651 - 31,011

*Including total indoor & outdoor built up area.*



GROUND FLOOR



**Disclaimer:** All pictures, plans, layouts, information, data and details included in this brochure are indicative only and may change at any time up to the final 'as built' status in accordance with final designs of the project, regulatory approvals and planning permissions. All accessories and interior finishes such as wallpaper, chandeliers, furniture, electronics, white goods, curtains, hard and soft landscaping, pavements, features, gym, and other elements displayed in the brochure, or between the plot boundary, are not part of the unit and are shown for illustrative purposes only.





# DIAMANTE VILLA

6-BED

**SQM**  
1,254 - 1,450

**SQFT**  
13,498 - 15,608

**PLOT SIZE**

**SQM** 2,476 - 2,881

**SQFT** 26,651 - 31,011

*Including total indoor & outdoor built up area.*



FIRST FLOOR



**Disclaimer:** All pictures, plans, layouts, information, data and details included in this brochure are indicative only and may change at any time up to the final 'as built' status in accordance with final designs of the project, regulatory approvals and planning permissions. All accessories and interior finishes such as wallpaper, chandeliers, furniture, electronics, white goods, curtains, hard and soft landscaping, pavements, features, gym, and other elements displayed in the brochure, or between the plot boundary, are not part of the unit and are shown for illustrative purposes only.





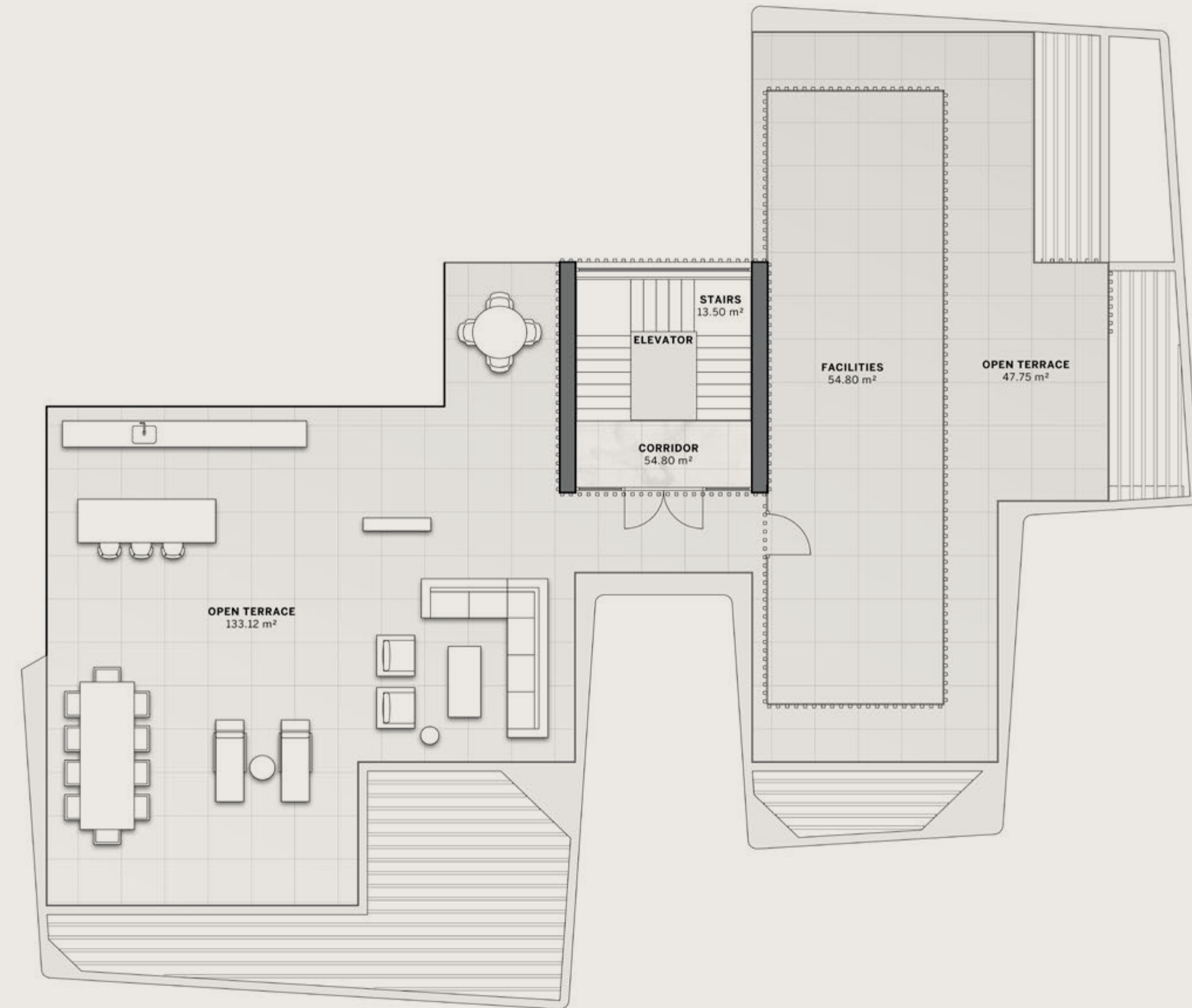
# DIAMANTE VILLA

<b>6 - BED</b>	<b>SQM</b> 1,254 - 1,450
	<b>SQFT</b> 13,498 - 15,608
<b>PLOT SIZE</b>	
<b>SQM</b>	2,476 - 2,881
<b>SQFT</b>	26,651 - 31,011

*Including total indoor & outdoor built up area.*



## ROOFTOP TERRACE



**Disclaimer:** All pictures, plans, layouts, information, data and details included in this brochure are indicative only and may change at any time up to the final 'as built' status in accordance with final designs of the project, regulatory approvals and planning permissions. All accessories and interior finishes such as wallpaper, chandeliers, furniture, electronics, white goods, curtains, hard and soft landscaping, pavements, features, gym, and other elements displayed in the brochure, or between the plot boundary, are not part of the unit and are shown for illustrative purposes only.





# ZAFIRO VILLAS

5 - B E D

**SQM** 863 - 1,034

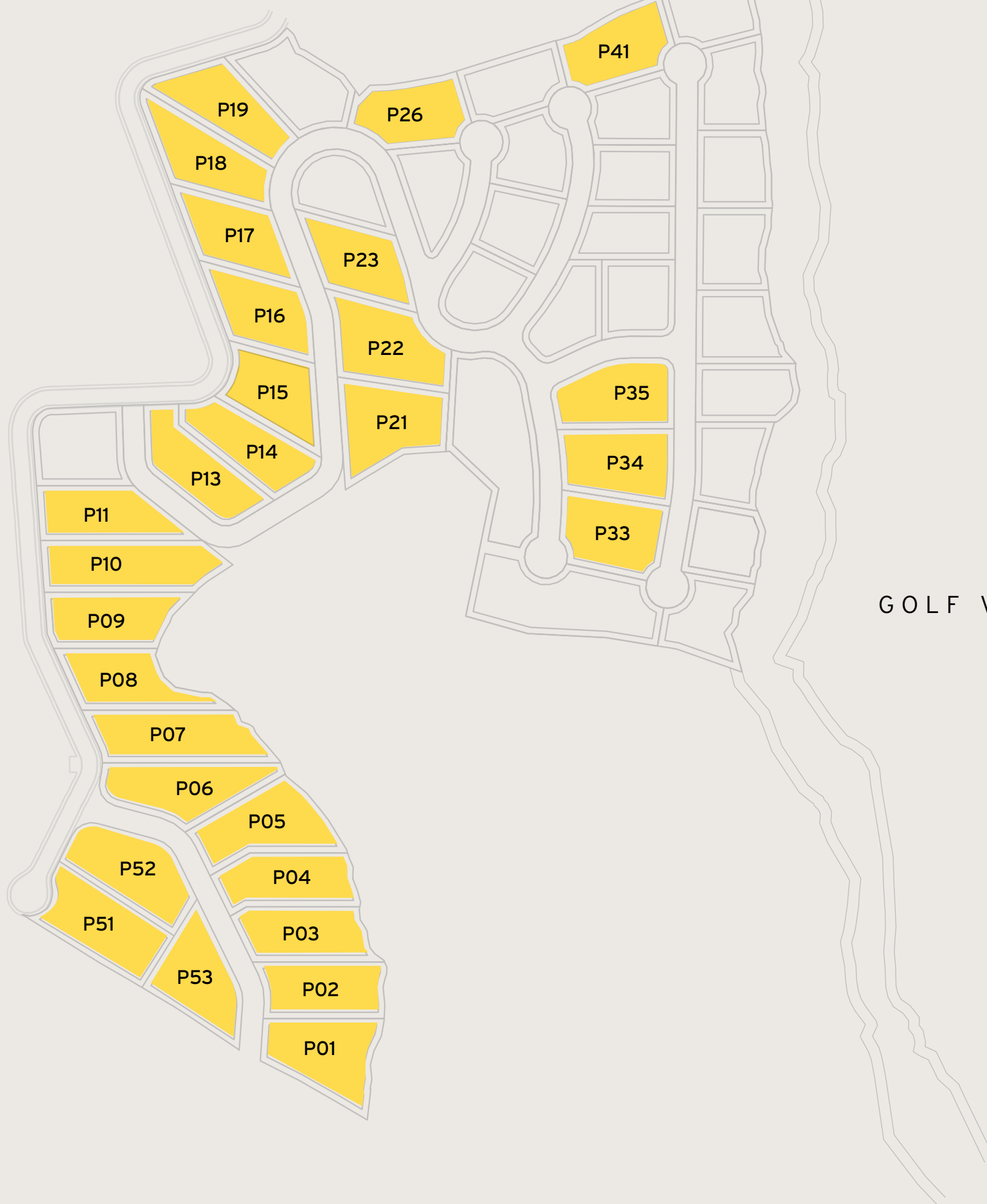
**SQFT** 9,289 - 11,130

**Disclaimer:** All pictures, plans, layouts, information, data and details included in this brochure are indicative only and may change at any time up to the final 'as built' status in accordance with final designs of the project, regulatory approvals and planning permissions. All accessories and interior finishes such as wallpaper, chandeliers, furniture, electronics, white goods, curtains, hard and soft landscaping, pavements, features, gym, and other elements displayed in the brochure, or between the plot boundary, are not part of the unit and are shown for illustrative purposes only.

**PLOT SIZE** / **SQM** 1,389 - 1,874

**SQFT** 14,951 - 20,172

*Including total indoor & outdoor built up area.*



GOLF VIEWS

SEA VIEWS







# ZAFIRO VILLAS

<b>5 - BED</b>	<b>SQM</b> 863 - 1,034
	<b>SQFT</b> 9,289 - 11,130
<b>PLOT SIZE</b>	
<b>SQM</b>	1,389 - 1,874
<b>SQFT</b>	14,951 - 20,172

Including total indoor & outdoor built up area.



**BASEMENT**



**Disclaimer:** All pictures, plans, layouts, information, data and details included in this brochure are indicative only and may change at any time up to the final 'as built' status in accordance with final designs of the project, regulatory approvals and planning permissions. All accessories and interior finishes such as wallpaper, chandeliers, furniture, electronics, white goods, curtains, hard and soft landscaping, pavements, features, gym, and other elements displayed in the brochure, or between the plot boundary, are not part of the unit and are shown for illustrative purposes only.





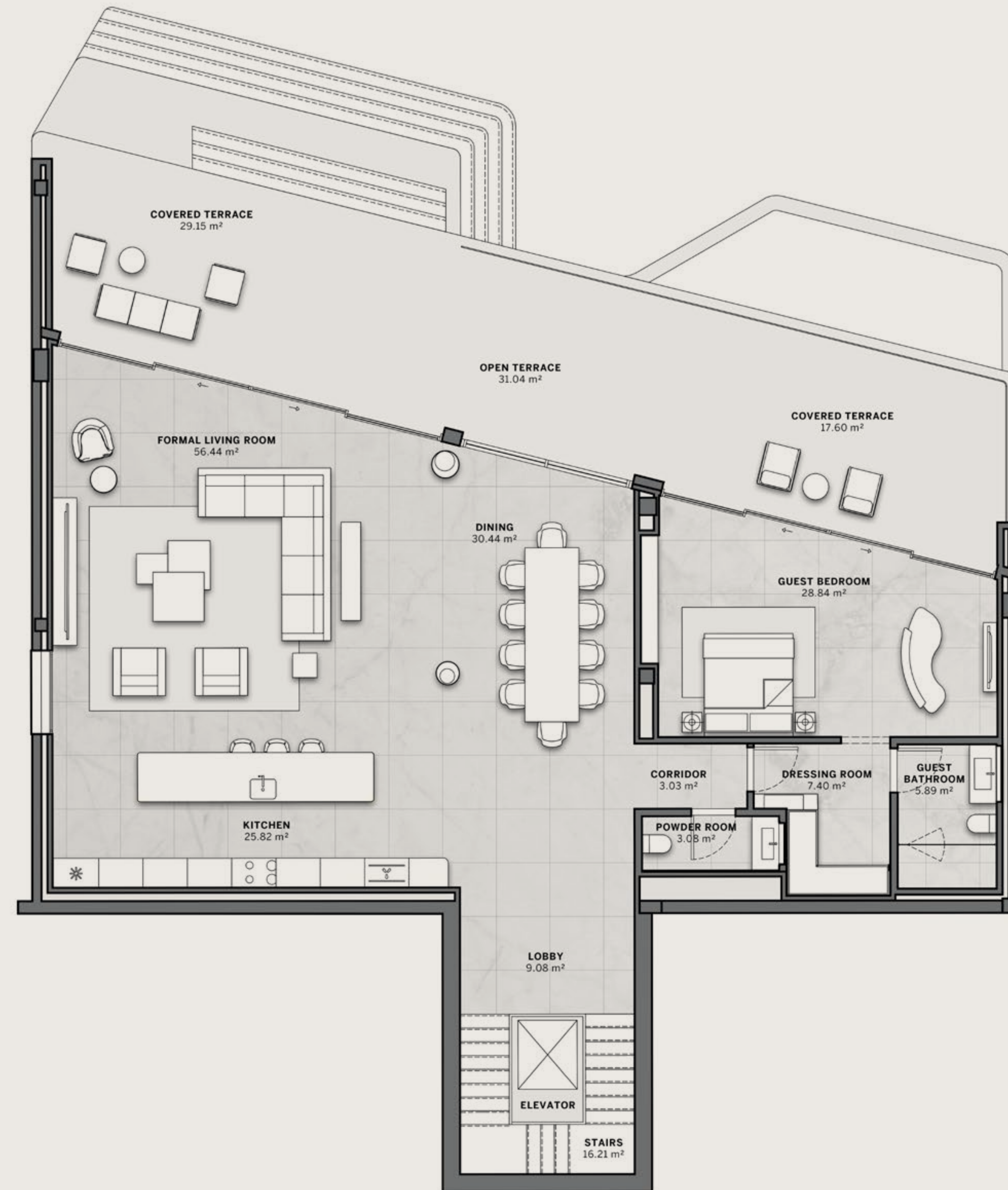
# ZAFIRO VILLAS

<b>5 - BED</b>	<b>SQM</b> 863 - 1,034
	<b>SQFT</b> 9,289 - 11,130
<b>PLOT SIZE</b>	
<b>SQM</b>	1,389 - 1,874
<b>SQFT</b>	14,951 - 20,172

*Including total indoor & outdoor built up area.*



**GROUND FLOOR**



**Disclaimer:** All pictures, plans, layouts, information, data and details included in this brochure are indicative only and may change at any time up to the final 'as built' status in accordance with final designs of the project, regulatory approvals and planning permissions. All accessories and interior finishes such as wallpaper, chandeliers, furniture, electronics, white goods, curtains, hard and soft landscaping, pavements, features, gym, and other elements displayed in the brochure, or between the plot boundary, are not part of the unit and are shown for illustrative purposes only.





# ZAFIRO VILLAS

<b>5 - BED</b>	<b>SQM</b> 863 - 1,034
	<b>SQFT</b> 9,289 - 11,130
<b>PLOT SIZE</b>	
<b>SQM</b>	1,389 - 1,874
<b>SQFT</b>	14,951 - 20,172

Including total indoor & outdoor built up area.



## FIRST FLOOR



**Disclaimer:** All pictures, plans, layouts, information, data and details included in this brochure are indicative only and may change at any time up to the final 'as built' status in accordance with final designs of the project, regulatory approvals and planning permissions. All accessories and interior finishes such as wallpaper, chandeliers, furniture, electronics, white goods, curtains, hard and soft landscaping, pavements, features, gym, and other elements displayed in the brochure, or between the plot boundary, are not part of the unit and are shown for illustrative purposes only.

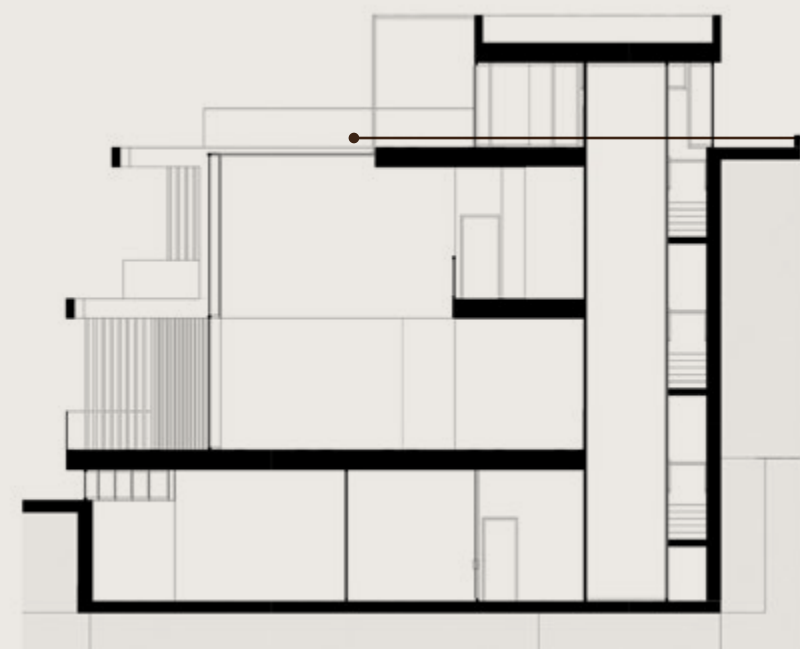




# ZAFIRO VILLAS

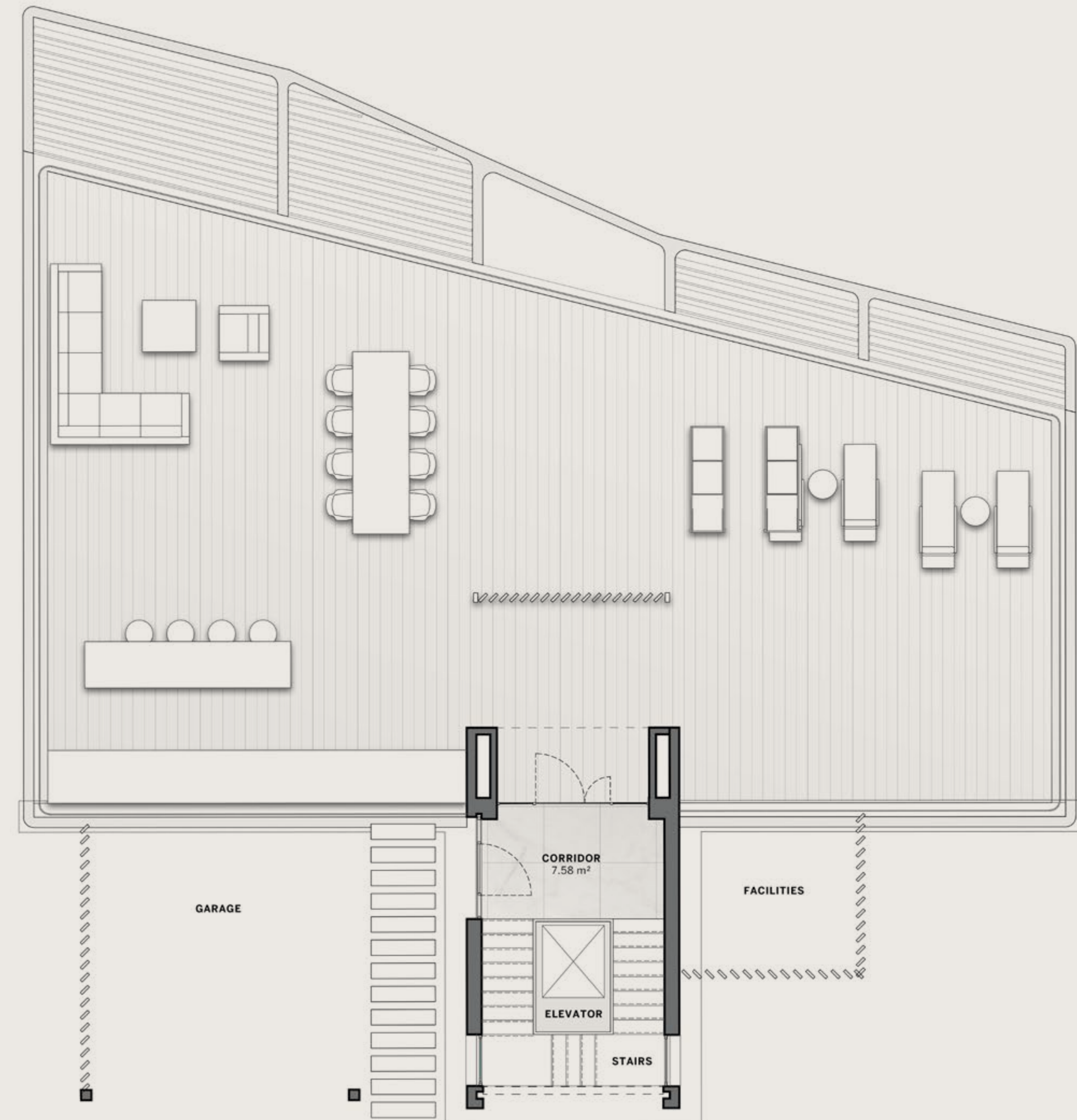
<b>5 - B E D</b>	<b>SQM</b> 863 - 1,034
	<b>SQFT</b> 9,289 - 11,130
<b>PLOT SIZE</b>	
<b>SQM</b>	1,389 - 1,874
<b>SQFT</b>	14,951 - 20,172

*Including total indoor & outdoor built up area.*



## ROOFTOP TERRACE

**Disclaimer:** All pictures, plans, layouts, information, data and details included in this brochure are indicative only and may change at any time up to the final 'as built' status in accordance with final designs of the project, regulatory approvals and planning permissions. All accessories and interior finishes such as wallpaper, chandeliers, furniture, electronics, white goods, curtains, hard and soft landscaping, pavements, features, gym, and other elements displayed in the brochure, or between the plot boundary, are not part of the unit and are shown for illustrative purposes only.







# ESMERALDA VILLAS

4 - B E D

SQM 680 - 822

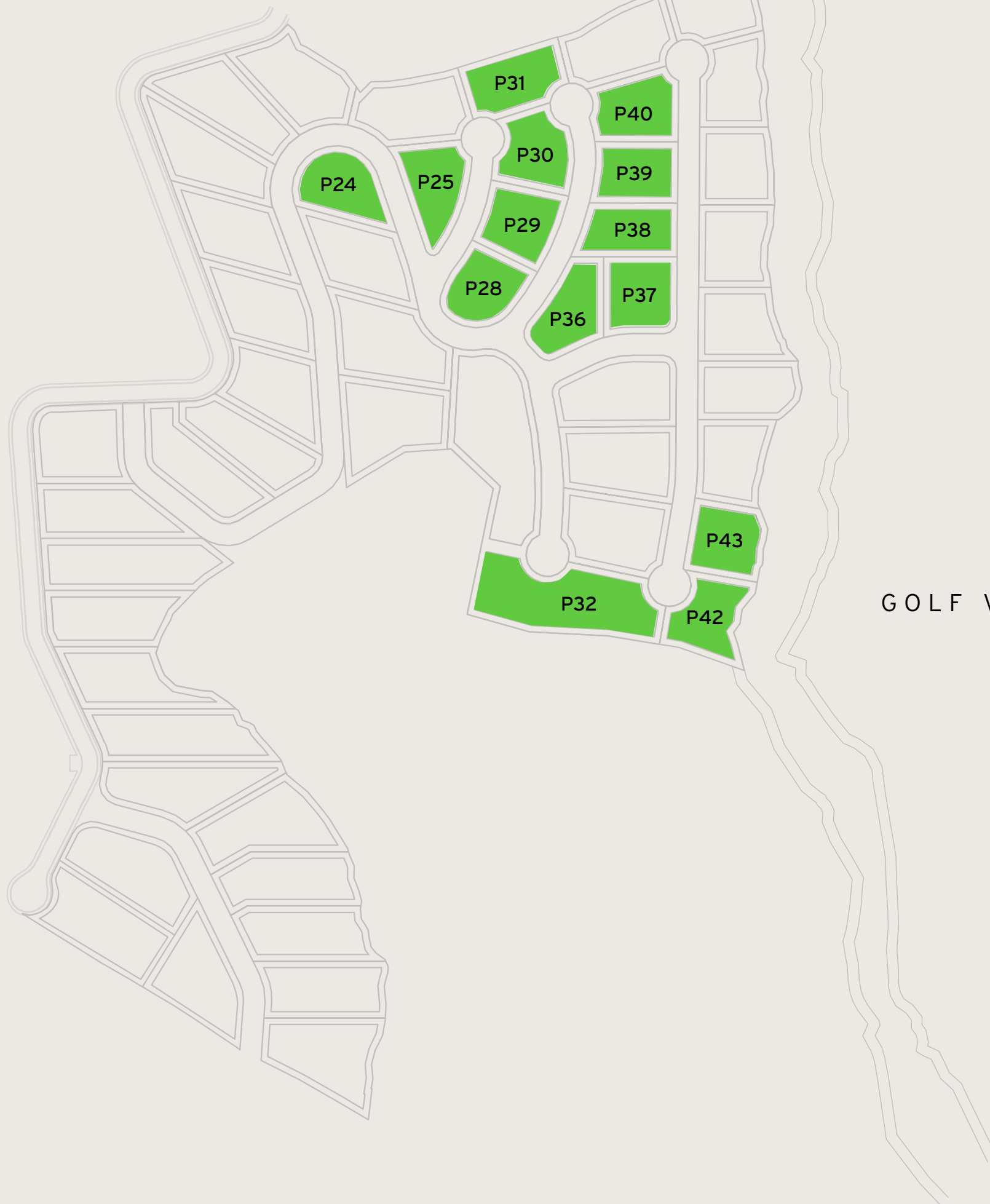
SQFT 7,320 - 8,848

**Disclaimer:** All pictures, plans, layouts, information, data and details included in this brochure are indicative only and may change at any time up to the final 'as built' status in accordance with final designs of the project, regulatory approvals and planning permissions. All accessories and interior finishes such as wallpaper, chandeliers, furniture, electronics, white goods, curtains, hard and soft landscaping, pavements, features, gym, and other elements displayed in the brochure, or between the plot boundary, are not part of the unit and are shown for illustrative purposes only.

PLOT SIZE / SQM 1,005 - 1,669

SQFT 10,818 - 17,965

Including total indoor & outdoor built up area.



GOLF VIEWS

SEA VIEWS



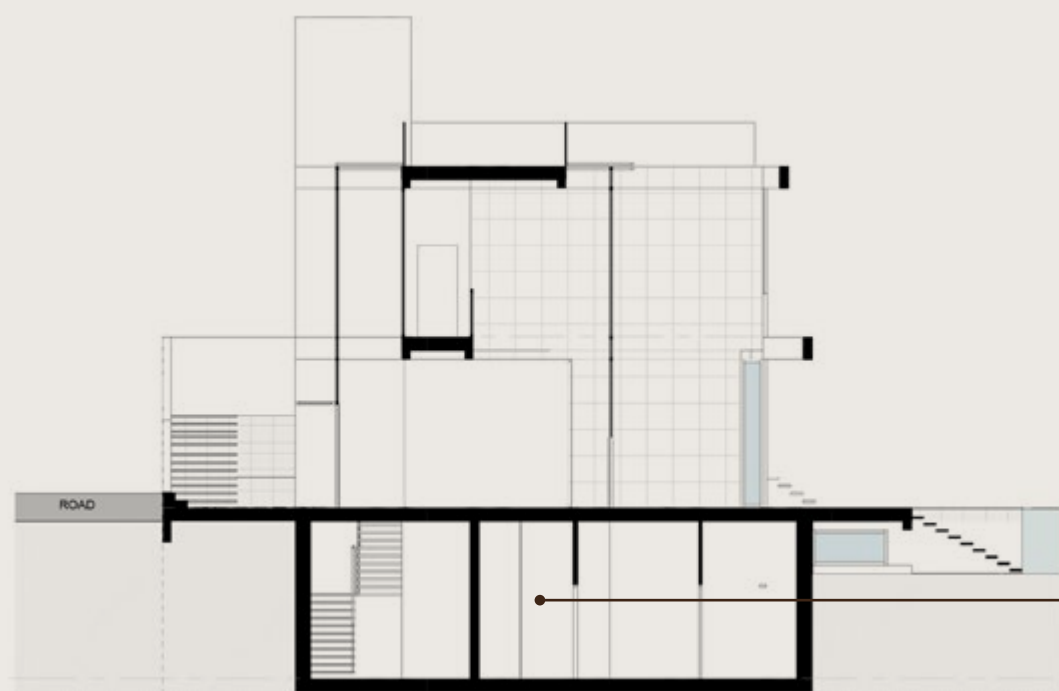




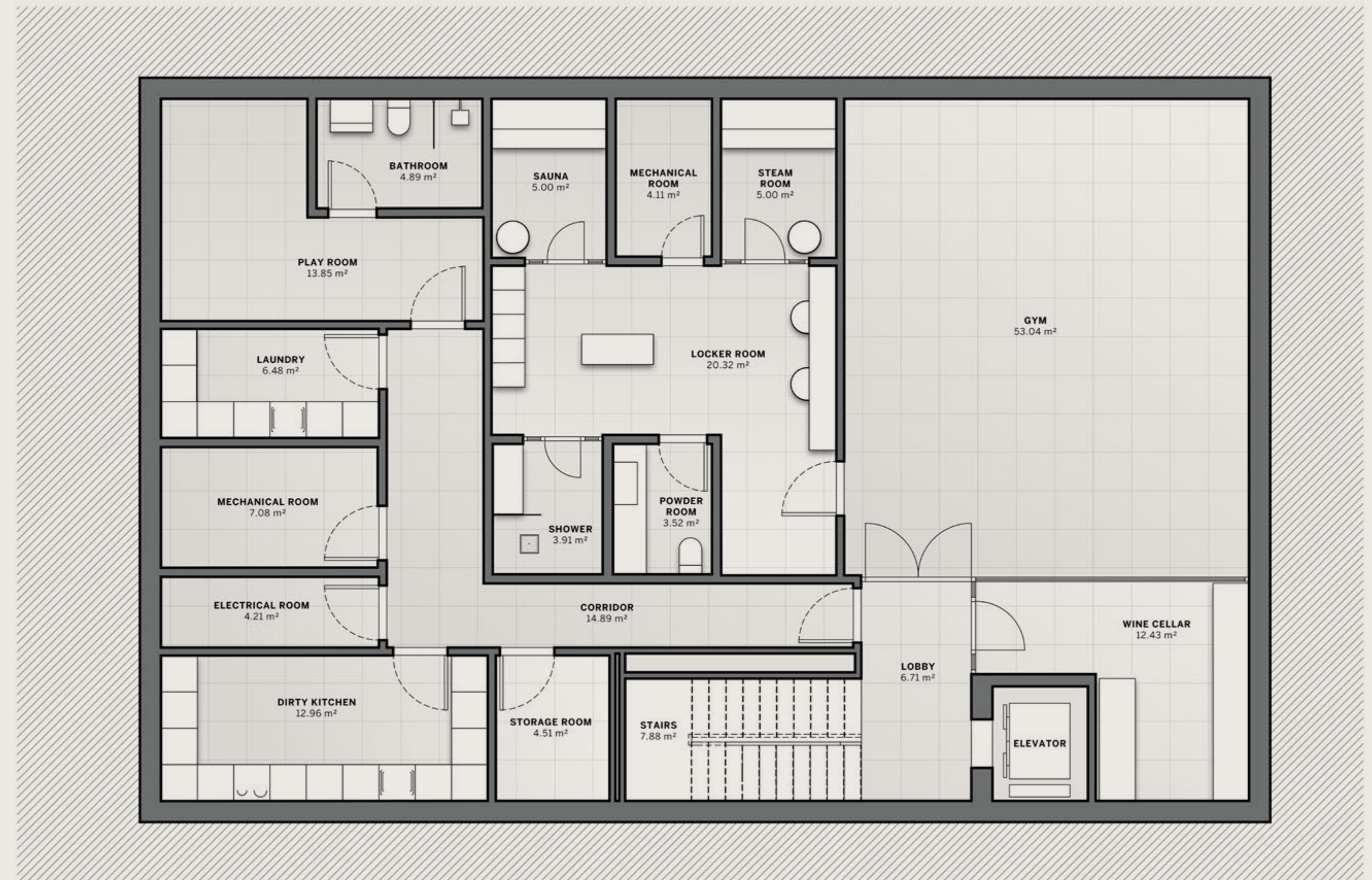
# ESMERALDA VILLAS

<b>4 - BED</b>	<b>SQM</b> 680 - 822
	<b>SQFT</b> 7,320 - 8,848
<b>PLOT SIZE</b>	
<b>SQM</b>	1,005 - 1,669
<b>SQFT</b>	10,818 - 17,965

Including total indoor & outdoor built up area.



**BASEMENT**



**Disclaimer:** All pictures, plans, layouts, information, data and details included in this brochure are indicative only and may change at any time up to the final 'as built' status in accordance with final designs of the project, regulatory approvals and planning permissions. All accessories and interior finishes such as wallpaper, chandeliers, furniture, electronics, white goods, curtains, hard and soft landscaping, pavements, features, gym, and other elements displayed in the brochure, or between the plot boundary, are not part of the unit and are shown for illustrative purposes only.

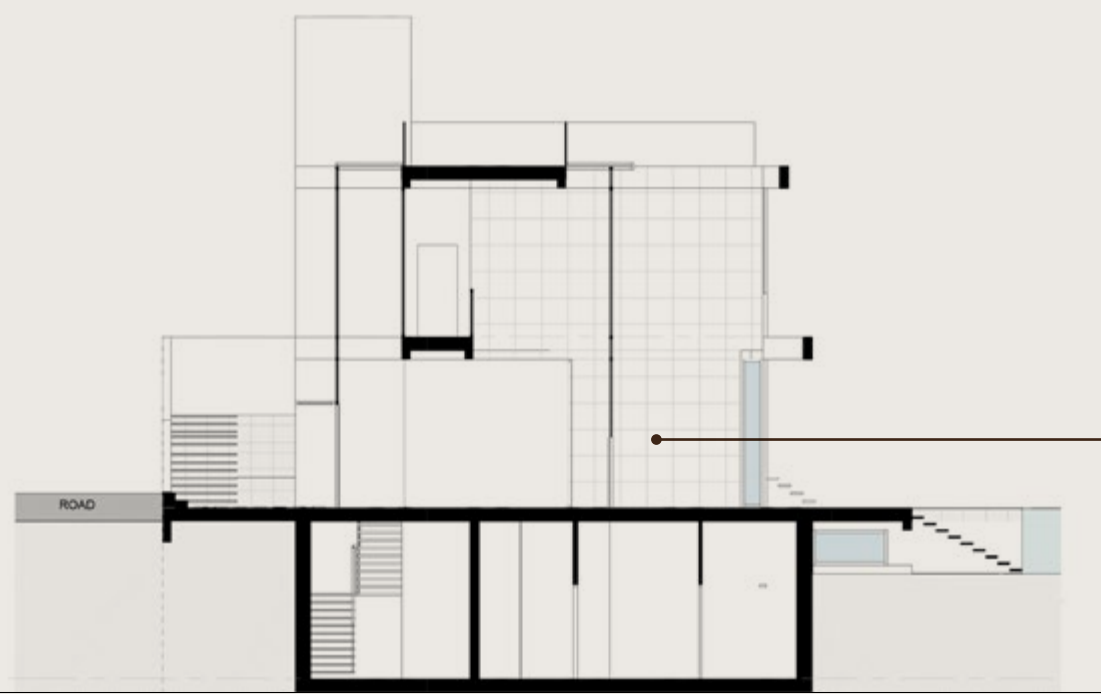
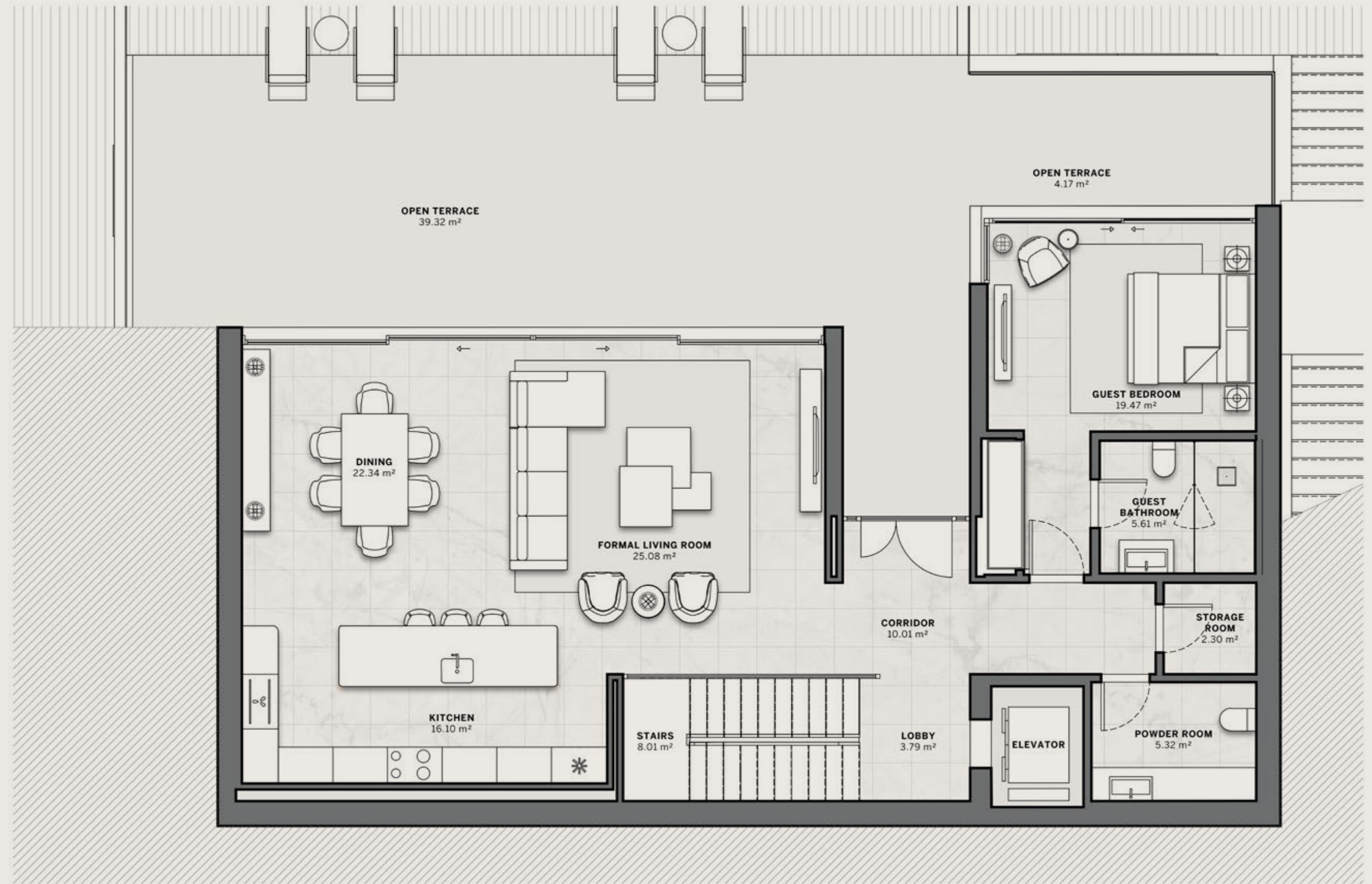




# ESMERALDA VILLAS

4 - BED	<b>SQM</b> 680 - 822
	<b>SQFT</b> 7,320 - 8,848
<b>PLOT SIZE</b>	
<b>SQM</b>	1,005 - 1,669
<b>SQFT</b>	10,818 - 17,965

Including total indoor & outdoor built up area.



GROUND FLOOR

**Disclaimer:** All pictures, plans, layouts, information, data and details included in this brochure are indicative only and may change at any time up to the final 'as built' status in accordance with final designs of the project, regulatory approvals and planning permissions. All accessories and interior finishes such as wallpaper, chandeliers, furniture, electronics, white goods, curtains, hard and soft landscaping, pavements, features, gym, and other elements displayed in the brochure, or between the plot boundary, are not part of the unit and are shown for illustrative purposes only.

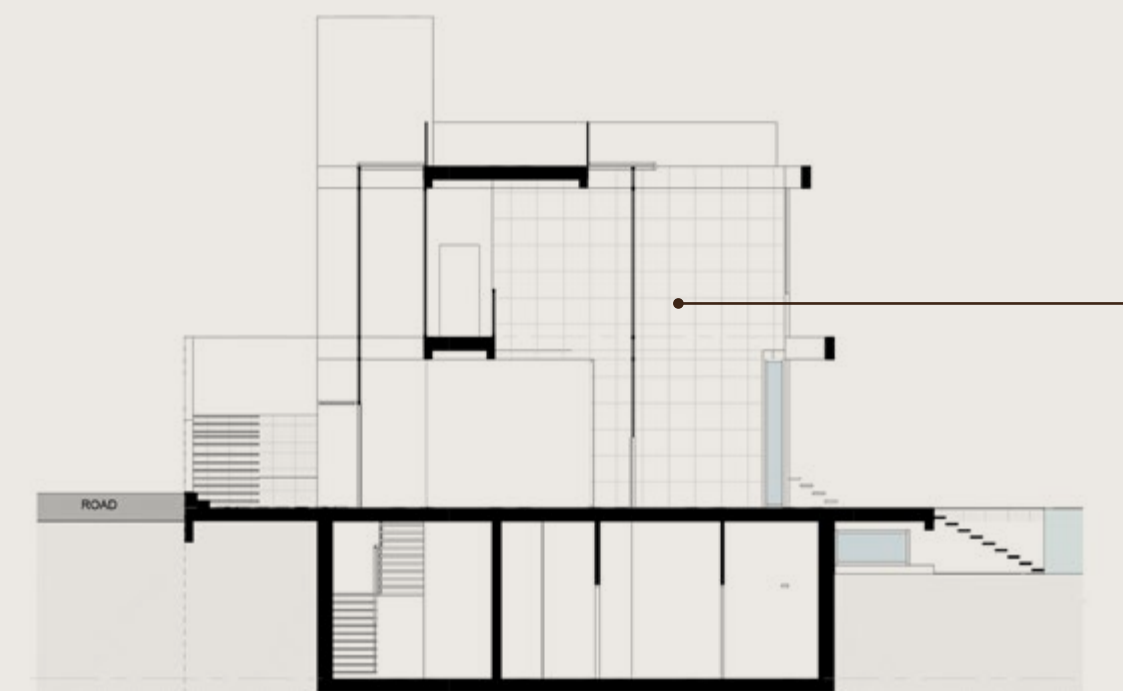




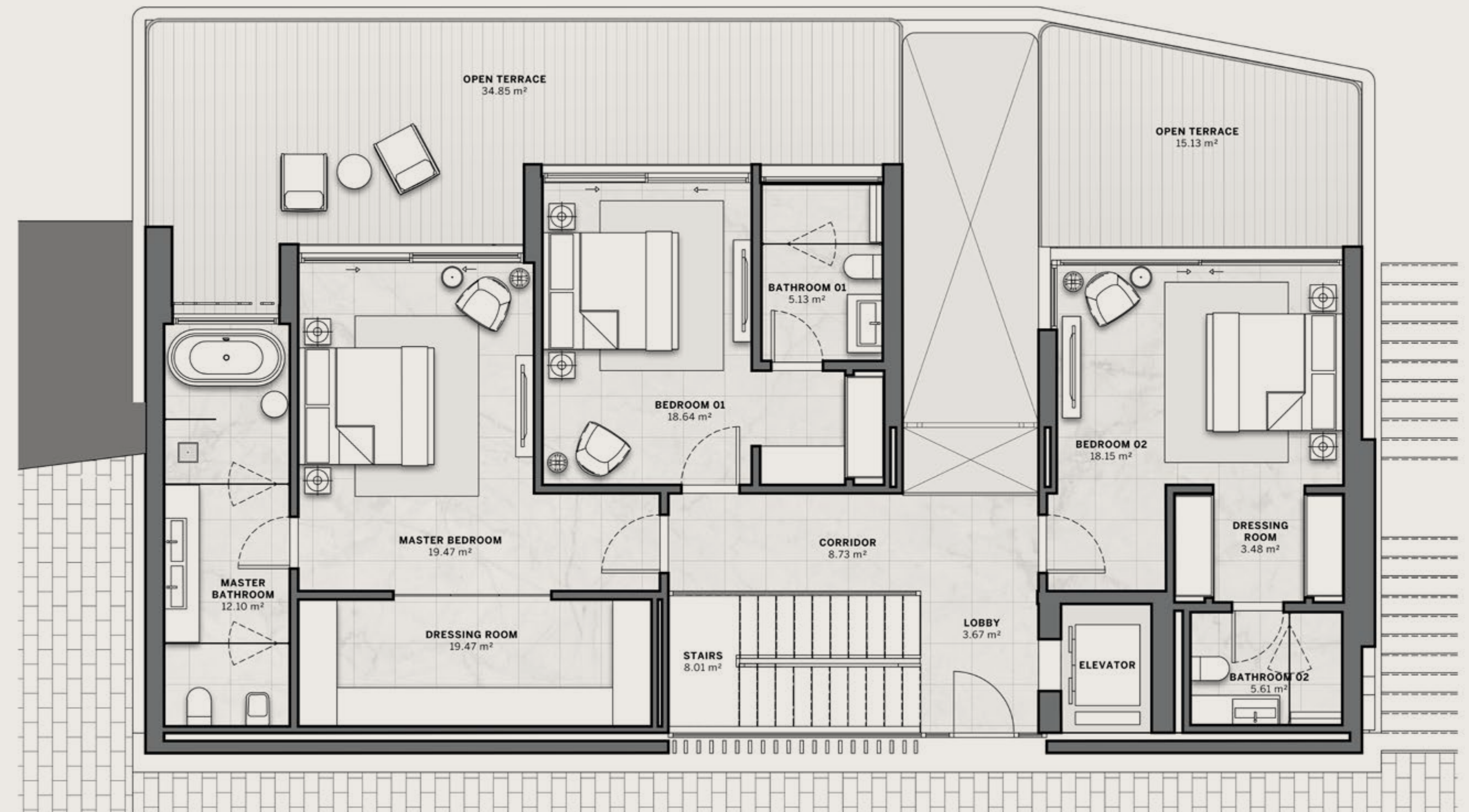
# ESMERALDA VILLAS

<b>4 - BED</b>	<b>SQM</b> 680 - 822
	<b>SQFT</b> 7,320 - 8,848
<b>PLOT SIZE</b>	
<b>SQM</b>	1,005 - 1,669
<b>SQFT</b>	10,818 - 17,965

*Including total indoor & outdoor built up area.*



## FIRST FLOOR



**Disclaimer:** All pictures, plans, layouts, information, data and details included in this brochure are indicative only and may change at any time up to the final 'as built' status in accordance with final designs of the project, regulatory approvals and planning permissions. All accessories and interior finishes such as wallpaper, chandeliers, furniture, electronics, white goods, curtains, hard and soft landscaping, pavements, features, gym, and other elements displayed in the brochure, or between the plot boundary, are not part of the unit and are shown for illustrative purposes only.



T/ERRA V/VA

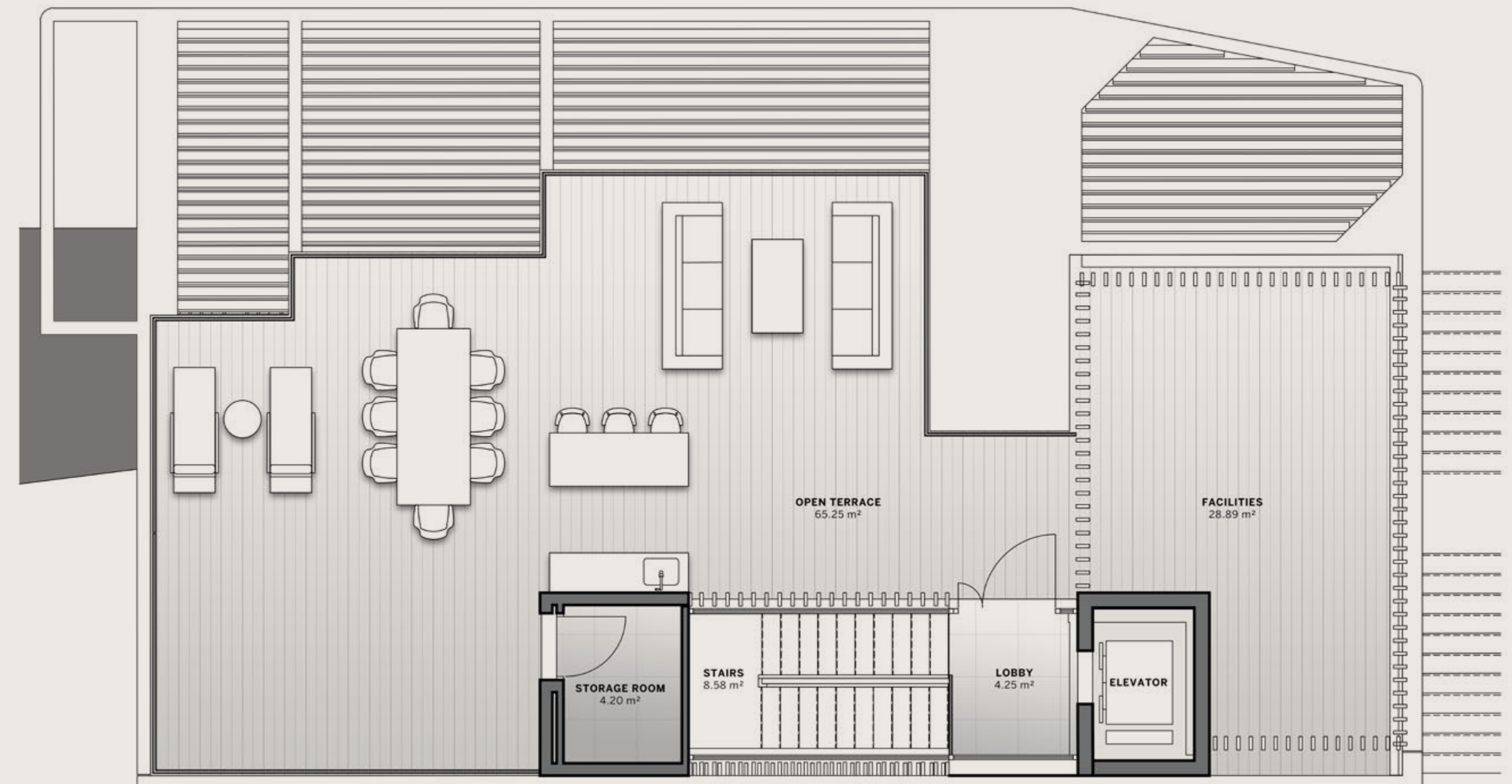
DARGLOBAL



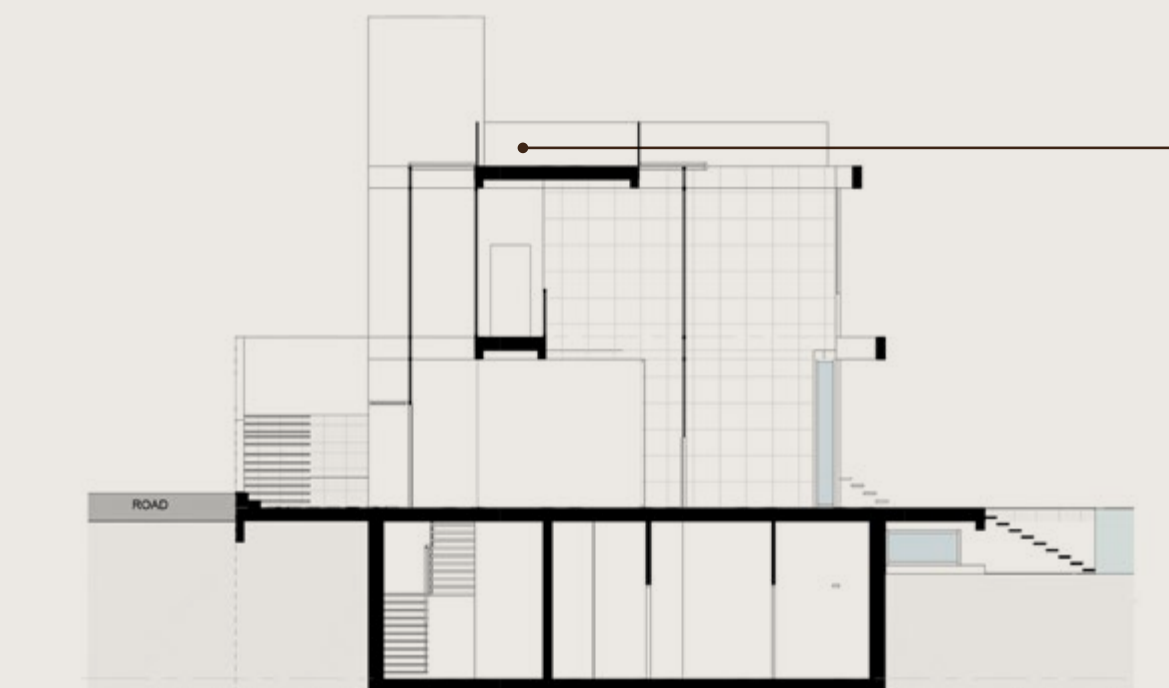
# ESMERALDA VILLAS

4 - B E D	<b>SQM</b> 680 - 822
	<b>SQFT</b> 7,320 - 8,848
<b>PLOT SIZE</b>	
<b>SQM</b>	1,005 - 1,669
<b>SQFT</b>	10,818 - 17,965

Including total indoor & outdoor built up area.



## ROOFTOP TERRACE



**Disclaimer:** All pictures, plans, layouts, information, data and details included in this brochure are indicative only and may change at any time up to the final 'as built' status in accordance with final designs of the project, regulatory approvals and planning permissions. All accessories and interior finishes such as wallpaper, chandeliers, furniture, electronics, white goods, curtains, hard and soft landscaping, pavements, features, gym, and other elements displayed in the brochure, or between the plot boundary, are not part of the unit and are shown for illustrative purposes only.



## Automobili Lamborghini S.p.A.

Founded in 1963, Automobili Lamborghini is headquartered in Sant'Agata Bolognese, in the province of Bologna, and produces some of the most desirable super sports cars in the world. Still rooted in its historic headquarters in the heart of Motorvalley, Lamborghini is synonymous with the highest technological expertise in the design and production of engines with extraordinary performance. The design of each model has always been unique: the language of forms is visionary and ahead of its time.

Brave, unexpected and authentic: the three values of the Sant'Agata Bolognese brand are reflected in the three models in the range, the V8 engine with Super SUV Urus, the perfect combination of power, performance, comfort and driving versatility and two super sports

cars with naturally aspirated V10 and V12 engines, the Huracán and the Aventador successor, the newborn Revuelto, the starting point to the "Direzione Cor Tauri", the hybridization and electrification of the whole Lamborghini range.

Automobili Lamborghini is today a global company with a balanced presence in the three macro-regions America, Europe/ Middle-East/Africa and Asia Pacific. Based on record commercial and financial results and in constant growth and with the support and passion of over 2,000 employees, Lamborghini is now aiming for an increasingly sustainable future, up to the introduction of a fourth model full electric, while still fully respecting the values and DNA of the brand.





LISTED ON THE  
LONDON STOCK EXCHANGE



Established in 2017 to upend the global luxury real estate market, DarGlobal combines experience and innovation to deliver the highest quality properties. World-class architects curate DarGlobal's homes that are modelled by renowned design icons; each DarGlobal home is built with the highest quality materials and maintained by experts within the field.

DarGlobal believes there is no better investment than an investment in luxury and takes pride in choosing the best-in-class locations and properties to provide lucrative investment opportunities for a distinct clientele.

BUILDING ON THE  
LEGACY OF THE  
LARGEST REAL  
ESTATE COMPANY  
IN THE REGION.

---

10

offices in  
different cities  
worldwide

30

years of  
experience

---

15K+

residential  
units delivered

8.9Bn\*

USD in assets

---

500,000 sqm

of commercial space delivered

---



**DARGLOBAL**

OUR OFFICES

**MARBELLA**

SPAIN

-

Marbella Club Golden Mile,  
Av. Bulevar Príncipe Alfonso  
de Hohenlohe, Marbella  
29602, Málaga, Spain  
T +34 952 68 76 80

**DUBAI**

UAE

-

Jumeirah Emirates Towers  
30th Floor, Sheikh Zayed Road.  
PO Box 2523, Dubai,  
United Arab Emirates  
T +971 4 247 8999

**LONDON**

UK

-

50 Hans Crescent,  
Knightsbridge, London,  
SW1X 0NA, United Kingdom  
T +44 7875 495156

**MUSCAT**

OMAN

-

Royal Opera House Muscat  
Shatti Al Qurum, Muscat,  
Sultanate of Oman  
T +968 2270 2777

**DOHA**

QATAR

-

Malibu Building,  
Lusail Entertainment City,  
Doha, Qatar  
T +974 800 3536

-

For more information on  
TIERRA VIVA  
please call +34 952 68 76 80

-

You can visit our  
website at  
**[darglobal.co.uk](https://darglobal.co.uk)**  
or via our [social media](#)  
platforms



# T/ERRA V/VA



[DARGLOBAL.CO.UK](http://DARGLOBAL.CO.UK)

Dar Al Arkan Spain S.L. shall at all times comply with the requirements established in Law 38/1999, of 5 November, on Building Regulation in relation to the receipt of sums on account prior to the commencement of the works or during the construction period, depositing such sums in a special account set up for this purpose and insuring such sums by means of a joint and several guarantee or surety insurance.