

DARGLOBAL

marea
interiors by **MISSONI**

EXCLUSIVE RESIDENCES
CASARES, CORTESIN

DARGLOBAL

MISSONI

UNVEILING A BRAND
NEW LOOK AND *feel*



A LOCATION
WITHOUT EQUAL
SURROUNDED
BY THE BEST OF
ALL WORLDS

marea
interiors by **MISSONI**

Polo Valley
Sotogrande ✕

Santa Maria
Polo Club ✕

Real Club
Valderrama ✕

LA ZAGALETA

BENAHAVÍS

MARBELLA

PUERTO BANÚS

ESTEPONA

SOTOGRADE

MALAGA

GIBRALTAR

The Mediterranean Sea

- 5min THE BEACH
- 14min CASARES VILLAGE
- 15min ESTEPONA
- 15min SANTA MARIA POLO CLUB
- 20min SOTOGRADE
- 20min REAL CLUB VALDERAMA
- 20min MARBELLA
- 25min POLO VALLEY SOTOGRADE
- 30min LA ZAGALETA
- 45min GIBRALTAR AIRPORT
- 50min MALAGA AIRPORT

15 MIN

/

TO ONE OF THE BEST POLO
CLUBS IN THE WORLD

SANTA MARÍA POLO CLUB



15 MIN

/

TO A COASTAL GEM OF
GOLDEN SANDS & DUNES

ESTEPONA



20 MIN

/

TO MARBELLA'S LUXURIOUS
MARINA MASTERPIECE

PUERTO BANÚS



20 MIN

/

TO ONE OF THE FINEST GOLF
COURSES IN EUROPE

REAL CLUB VALDERRAMA





A *chic* ENCLAVE

An upscale residential community at Finca Cortesin, offering a harmonious blend of refined living within the pristine landscapes of Costa del Sol.

This exclusive gated community offers 2-, 3- and 4-bedroom residences, features a private entrance and 24/7 premium security services, to guarantee the highest standard in terms of security and privacy.



SOPHISTICATED
MEDITERRANEAN *flair*

Minimalist approach, simplicity and purity of lines, this is the idea behind the Contemporary Mediterranean Style. Modern elements and natural materials create a warm, inviting atmosphere complemented by soft, warm and natural lighting.



DARGLOBAL

MISSONI





DARGLOBAL

MISSONI





DARGLOBAL

MISSONI



DARGLOBAL

MISSONI

refined living
WITH BREATHTAKING
VIEWS



DARGLOBAL

MISSONI

THREE COUNTRIES. ONE HORIZON.

Unrivalled 270-degree panorama: from Marbella and the vast Mediterranean to Gibraltar and Morocco's mountains.

MARBELLA

MEDITERRANEAN SEA

GIBRALTAR & MOROCCO

FINCA CORTESIN



These photos were taken on site

The allure

**OF FINCA CORTESIN'S
GOLF COURSE**

Here, it's not just about a style; it's about a lifestyle where your home offers not just comfort and beauty but also a window to the stunning vistas of the golf course, making each day a celebration of nature and design.



DARGLOBAL

MISSONI

Panorama
OF COASTAL SPLENDOR

Marea, interiors by Missoni, offers breathtaking views of the entire Costa del Sol coastline, stretching from Marbella all the way to Gibraltar.



DARGLOBAL

MISSONI



DARGLOBAL

MISSONI

RESIDENCES WITH
CASCADING PRIVATE

Gardens



LIVING COMES
natural

Nature at Miradas is not just a surrounding but it's a significant part of the architecture. The Mediterranean maquis turns these apartments into a living environment, where the relationship between inside and outside is reinterpreted in a new, spontaneous language.



DARGLOBAL

MISSONI

GET READY TO *Bloom*

Feel free to reconnect with your inner nature, walking through the elegant, terraced gardens with lushing plants and tastefully decorated by Missoni.



ENVELOPED
IN MODERN *comforts*
AND AMENITIES



GATED
COMMUNITY*



24/7 PREMIUM
SECURITY SERVICES*



STATE-OF-THE-ART
GYM



INFINITY
POOL



TENNIS
COURT



COMMUNITY
GARDEN



DEDICATED AREAS
FOR CHILDREN

SWIMMING
POOL

SPLASH
AREA

* Provided by Cortesin macro community.

Upscale AMENITIES

At the core of the community is where connections sparkle and new ideas are born. Here are a majestic pool deck to unwind, indoor and outdoor kids areas, and a modern fitness center for residents' well-being.



Fitness Centre

INTERIORS BY MISSONI

Luxury comes with a healthier lifestyle. At Marea, interiors by Missoni, the well-being center was specifically designed and equipped to satisfy every fitness enthusiast, while soothing into incomparable coastal views.



IN MAREA'S NEIGHBORHOOD

FINCA
CORTESIN
HOTEL & GOLF CLUB

Finca Cortesin

“ THIS IS CERTAINLY ONE
OF EUROPE'S SMARTEST
PLACES TO ESCAPE TO. ”

Conde Nast Traveler, UK

Finca Cortesin, recognized as one of Spain's most prestigious hotels, stands as a serene retreat. True to its reputation, this resort boasts a distinction among the world's top 50 hotels.



IN MAREA'S NEIGHBORHOOD

MEDITERRANEAN CHARM
WITH A TWIST OF
contemporary LIVING,
RIGHT NEXT DOOR

With its palm-studded patios and perfumed Mediterranean gardens, Finca Cortesin offers a lavish spa, four pools, tennis facilities, a grand beach club, and exquisite dining featuring a Michelin Star restaurant.



5-STAR HOTEL



4 SWIMMING POOLS



BEACH CLUB



RESTAURANTS



CHAMPIONSHIP GOLF COURSE



TENNIS COURT



SPA & SPORTS CLUB



SHOPPING AREA



IN MAREA'S NEIGHBORHOOD

Home to
SOLHEIM CUP 2023
& NICKLAUS ACADEMY

Finca Cortesin's 18-hole championship golf course is Spain's finest, offering one of Europe's most memorable golfing experiences. Paired with this is Nicklaus Academy, boasting top-tier instruction under the legacy of Jack Nicklaus.

AREA'S NEIGHBORHOOD

Sotogrande's
INTERNATIONAL
POLO TOURNAMENT

With world-renowned polo clubs like the Santa María Polo Club and the Los Pinos Polo Club, these establishments are more than just sporting grounds—they are symbols of aspiration.



IN MAREA'S NEIGHBORHOOD

THE THRILL OF
horseback riding
THROUGH CASARES

Journey across the renowned Casares' white villages and the mediterranean coast, and fully embrace the wonders of Costa Del Sol's nature, all while perched atop a majestic horse.

DARGLOBAL

marea
interiors by **MISSONI**

**SPECIFICATIONS
& FLOOR PLANS**

DISCLAIMER

All pictures, plans, layouts, information, data and details included in this brochure are indicative only and may change at any time up to the final 'as built' status in accordance with final designs of the project, regulatory approvals and planning permissions. All accessories and interior finishes such as wallpaper, chandeliers, furniture, electronics, white goods, curtains, hard and soft landscaping, pavements, features, gym, and other elements displayed in the brochure, or between the plot boundary, are not part of the unit and are shown for illustrative purposes only.

LOWER PLATFORM

BLOCK A

BLOCK B

UPPER PLATFORM

BLOCK C

BLOCK D

AMENITIES

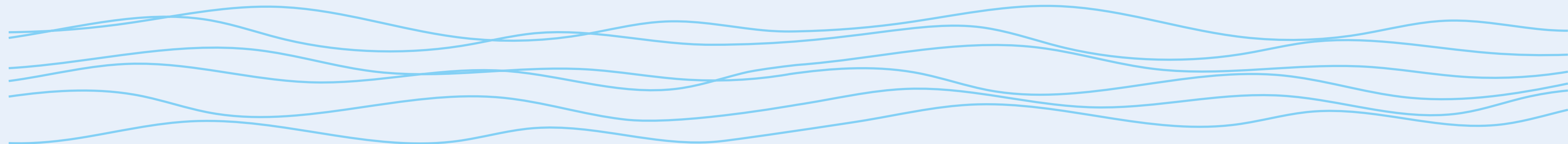
- 1 INFINITY POOL
- 2 STATE-OF-THE-ART GYM
- 3 TENNIS COURT
- 4 COMMUNITY GARDEN
- 5 CHILDREN SWIMMING POOL
- 6 CHILDREN SPLASH AREA



GOLF VIEW



MEDITERRANEAN SEA VIEW



SPECIFICATIONS

PROJECT

- Location: Cortesin, Casares, Costa Del Sol, Spain
- Developer: Subsidiary of Dar Global PLC
- Interiors: Missoni
- Configuration: 4 blocks, B+G+2 each
- Unit type: Unfurnished
- Ceiling height: 3 meters (rooms)
- No of elevators: 9 across the 4 building blocks
- 2-bed units: 1 parking space and storage
- 3- and 4-bed units: 2 parking spaces and storage

SERVICES

- Underground parking
- Pool and communal area maintenance
- 24/7 premium security*
- Gated Community*

* Provided by Cortesin macro community.

AMENITIES

- Infinity pool
- State-of-the-art gym
- Tennis court
- Children swimming pool
- Children splash area

FOYER / LIVING / DINING

- Internal wall finishes with premium quality emulsion paint
- Missoni inspired accent wall finish
- Suspended ceiling in gypsum for the dry areas and waterproof plasterboard for the wet areas

KITCHEN

- Prime locally sourced porcelain flooring tiles
- Prime locally sourced porcelain skirting tiles
- Paint and porcelain walls
- Suspended ceiling in gypsum for the dry areas and waterproof plasterboard for the wet areas
- Solid surface countertops
- Joinery with lacquered or laminate finish for cabinets
- Accent fronts: Missoni inspired laminate finish
- Appliances: Stainless steel sink, fridge, oven, hob, hood and washing machine. Brand: Siemens or equivalent

BEDROOMS

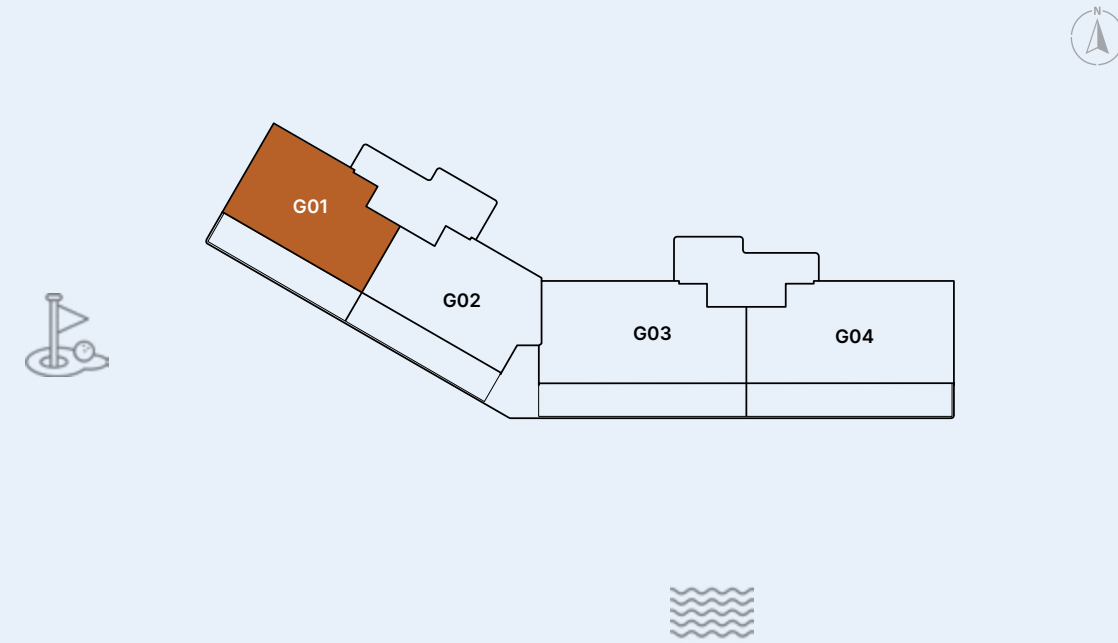
- Prime locally sourced porcelain tiles wood effect flooring
- Prime locally sourced porcelain tiles wood effect skirting
- Plastered walls with emulsion paint
- Missoni inspired accent wall finish
- Paint finish ceiling
- Built-in joinery with lacquered or laminate finish wardrobe

BATHROOMS / POWDER ROOM

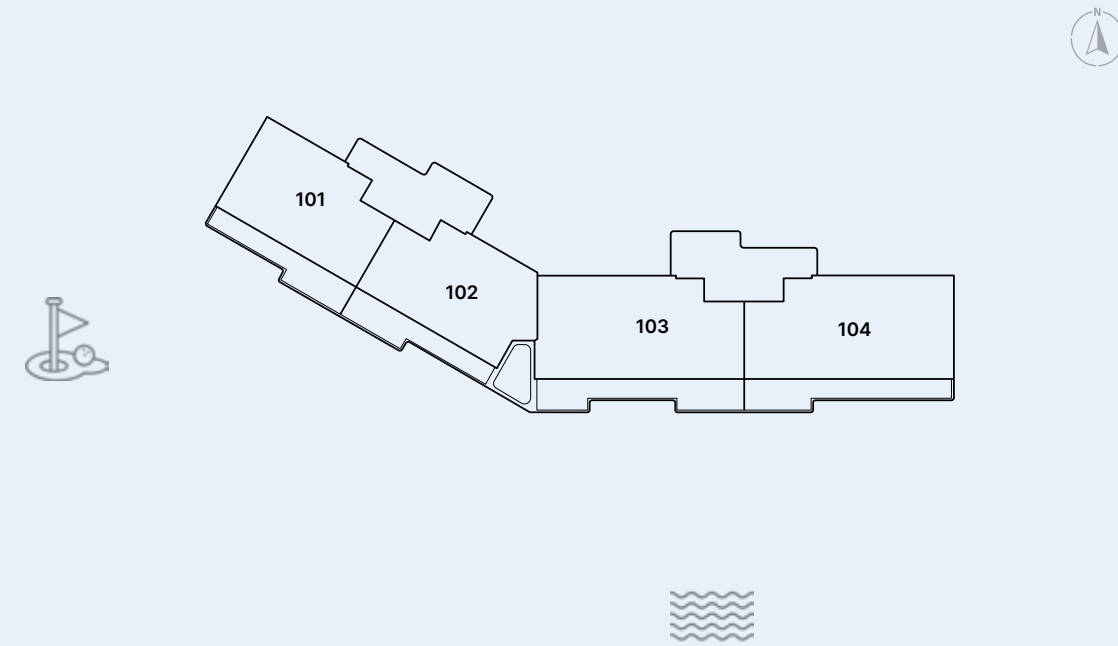
- Prime locally sourced porcelain flooring tiles - marble look
- Prime locally sourced porcelain wall tiles - marble look
- Missoni inspired accent wall finish
- Moisture resistant gypsum ceiling finished with paint
- Solid surface countertop or equivalent
- Joinery with lacquered or laminate finish
- Porcelanosa, Duravit sanitary fixtures and accessories or equivalent
- Duravit sanitary ware and accessories or equivalent
- Mirror included in bathrooms
- Missoni inspired mirror in powder room



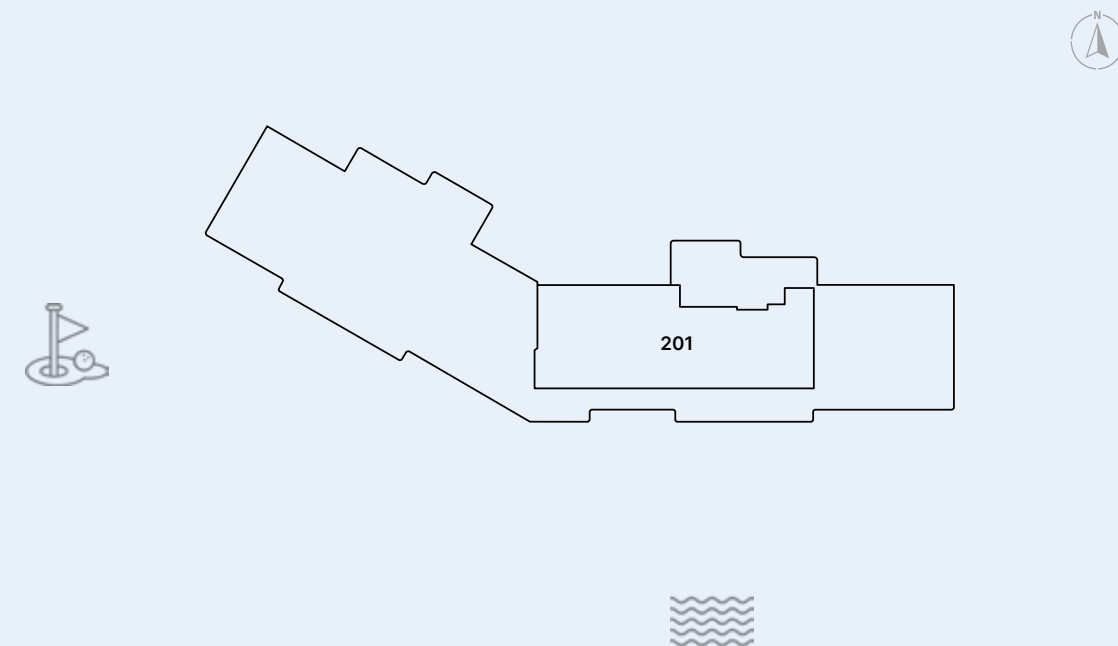
GROUND FLOOR



FIRST FLOOR

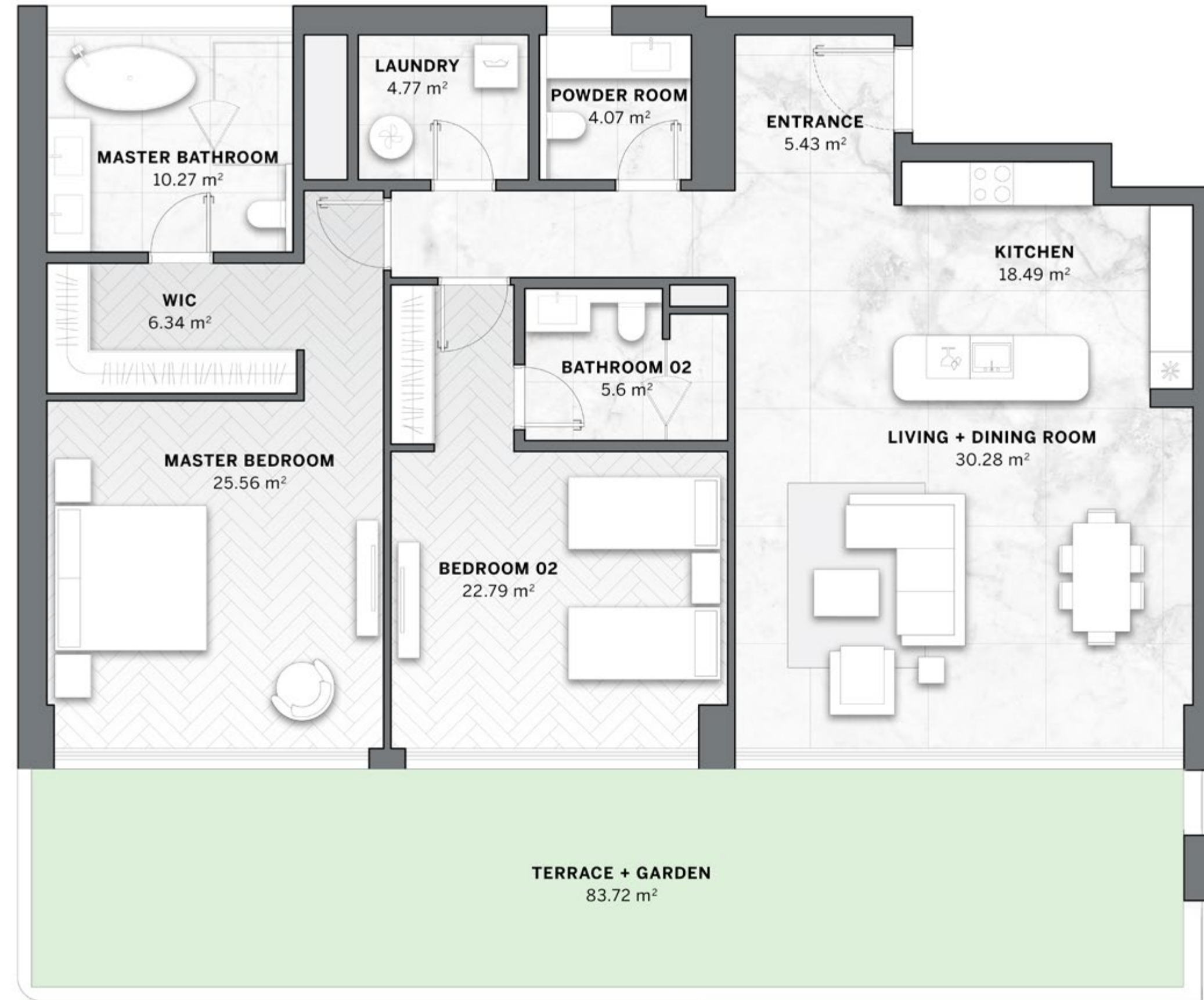


SECOND FLOOR



2 BEDROOMS
TYPE - A -

RESIDENCES WITH
CASCADING PRIVATE
GARDENS



RESIDENCE (m ²)	
Internal Built up Area	160.5
GF Garden Area	83.72
Common Built up Area	23.06

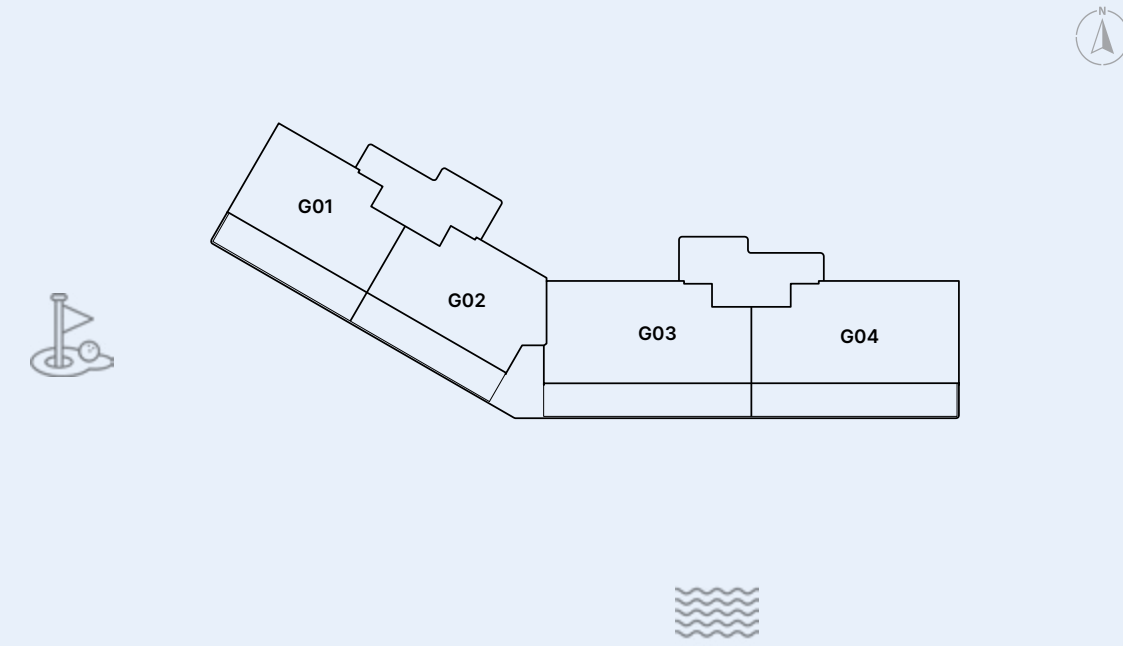
TOTAL AREA (m ²)	
Total Built up Area	267.28
<i>(incl. common area)</i>	

PARKING	
Space	1

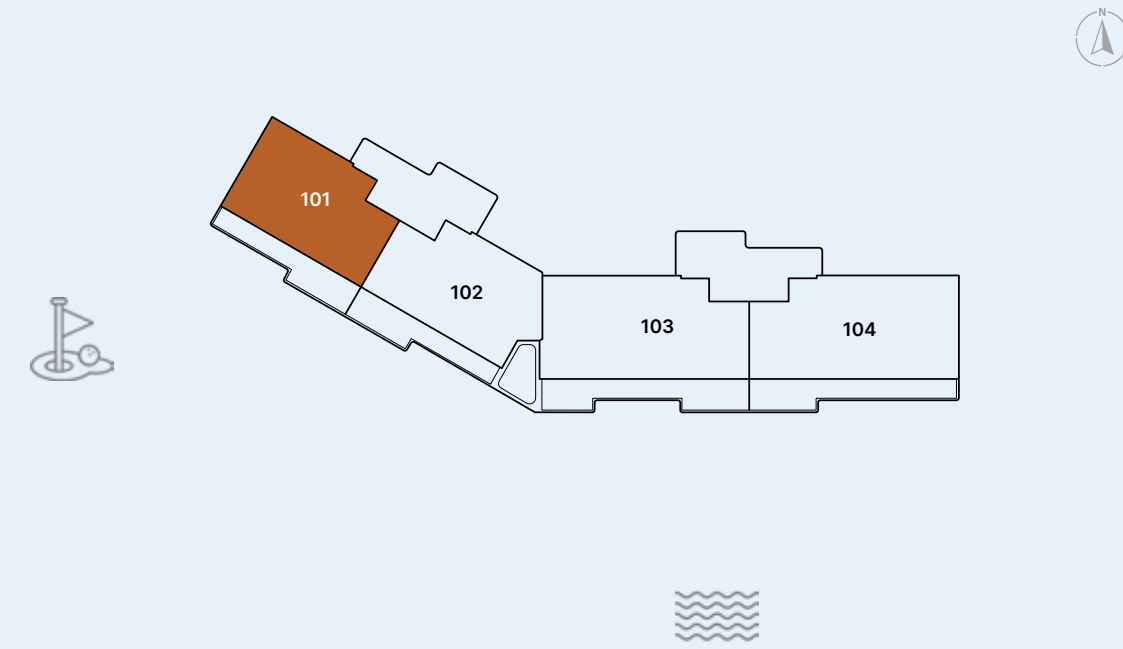
Disclaimer:
All pictures, plans, layouts, information, data and details included in this brochure are indicative only and may change at any time up to the final 'as built' status in accordance with final designs of the project, regulatory approvals and planning permissions. All accessories and interior finishes such as wallpaper, chandeliers, furniture, electronics, white goods, curtains, hard and soft landscaping, pavements, features, gym, and other elements displayed in the brochure, or between the plot boundary, are not part of the unit and are shown for illustrative purposes only.

2 BEDROOMS
TYPE - A -

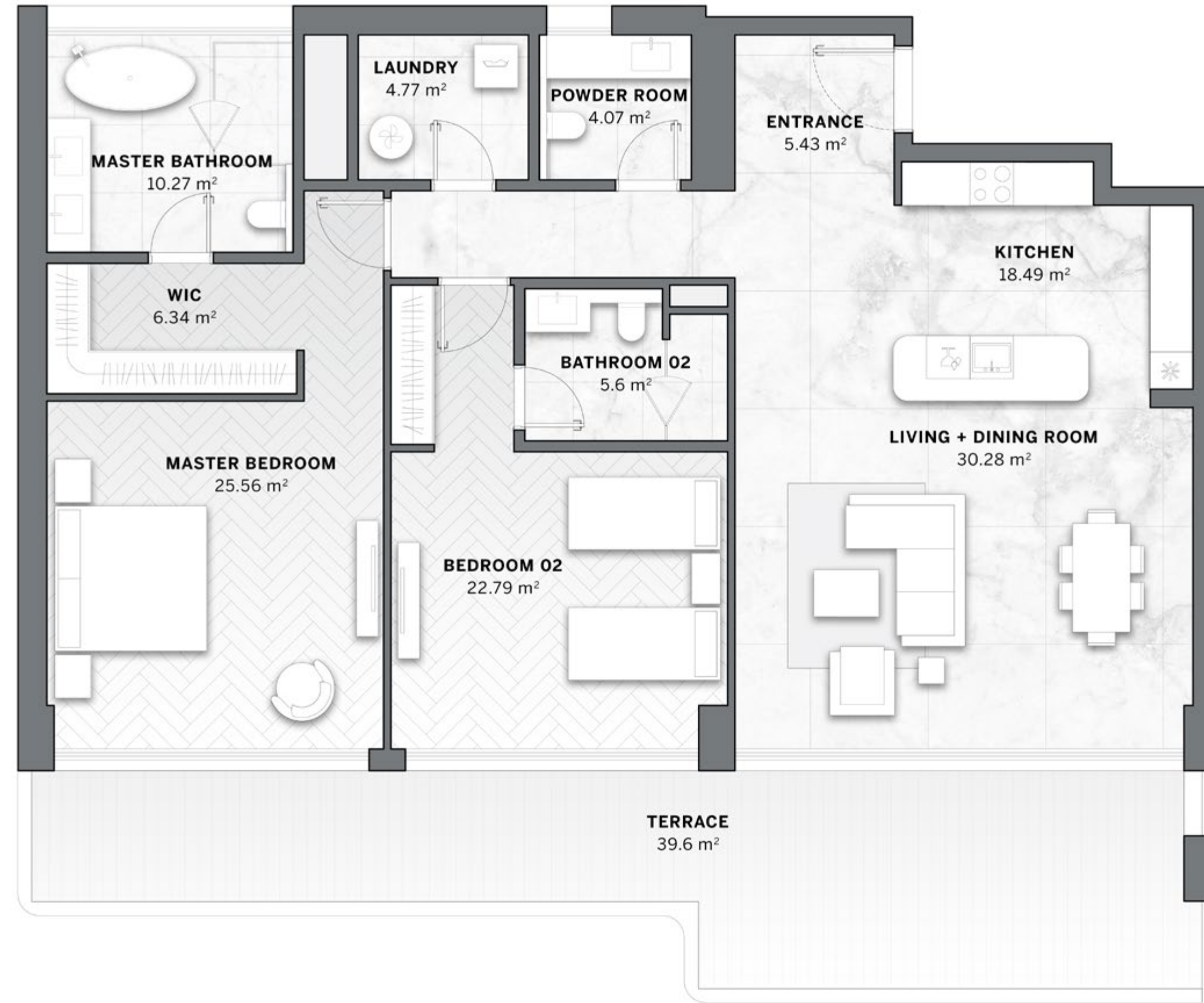
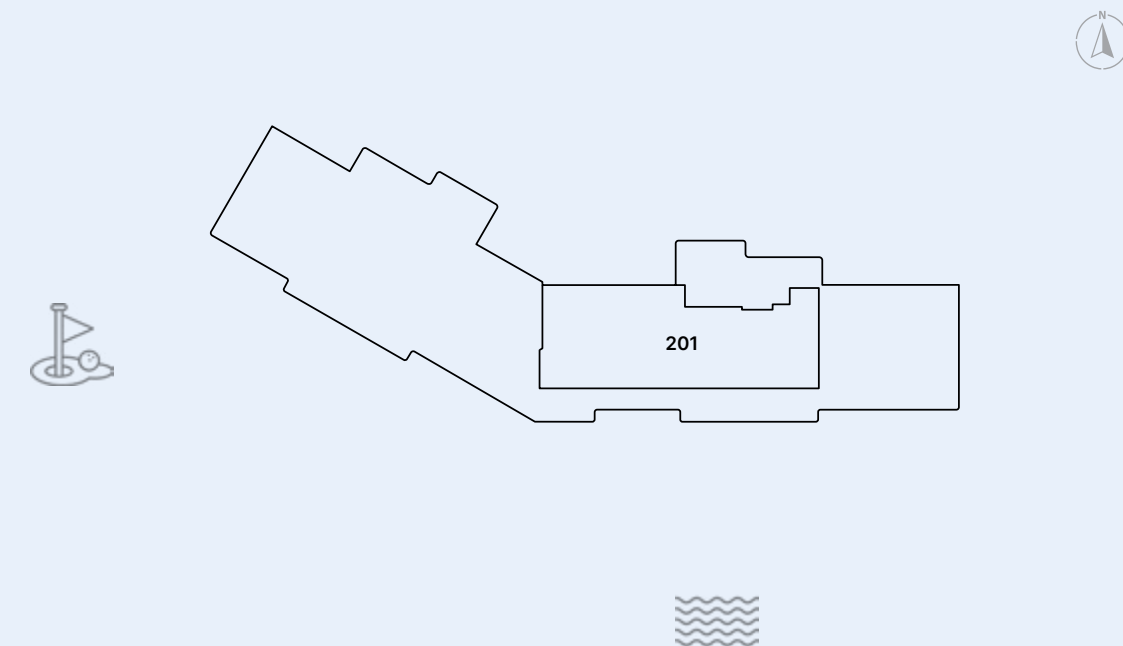
GROUND FLOOR



FIRST FLOOR



SECOND FLOOR



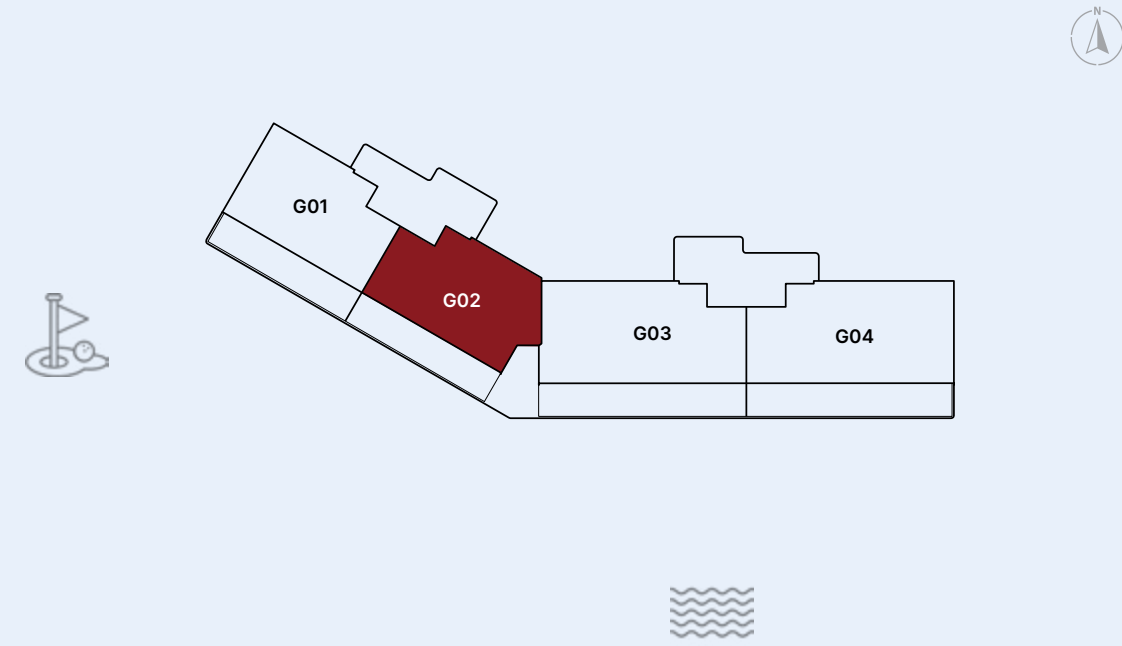
RESIDENCE (m ²)	
Internal Built up Area	160.5
Terrace Built up Area	39.6
Common Built up Area	23.06

TOTAL AREA (m ²)	
Total Built up Area	223.16
<i>(incl. common area)</i>	

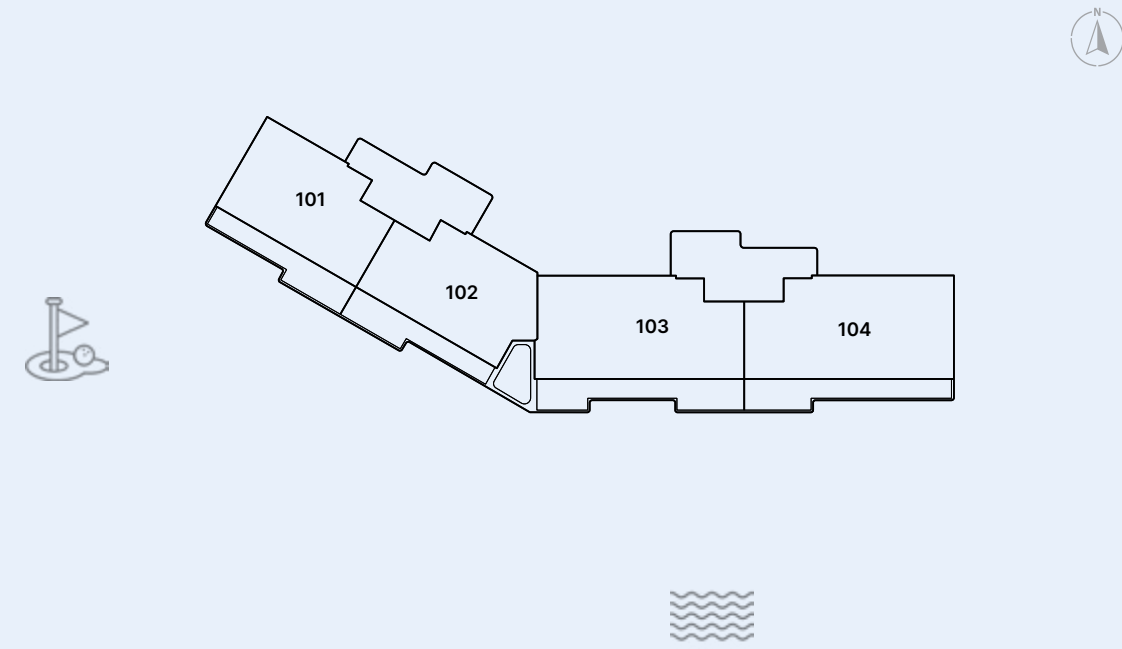
PARKING	
Space	1

Disclaimer:
All pictures, plans, layouts, information, data and details included in this brochure are indicative only and may change at any time up to the final 'as built' status in accordance with final designs of the project, regulatory approvals and planning permissions. All accessories and interior finishes such as wallpaper, chandeliers, furniture, electronics, white goods, curtains, hard and soft landscaping, pavements, features, gym, and other elements displayed in the brochure, or between the plot boundary, are not part of the unit and are shown for illustrative purposes only.

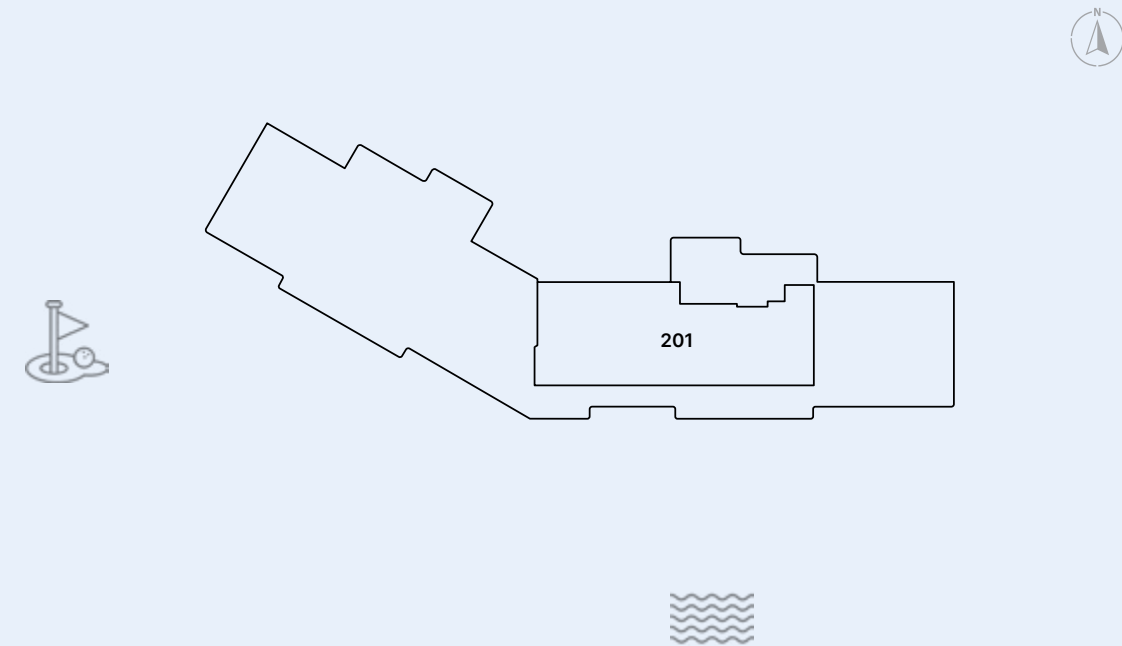
GROUND FLOOR



FIRST FLOOR

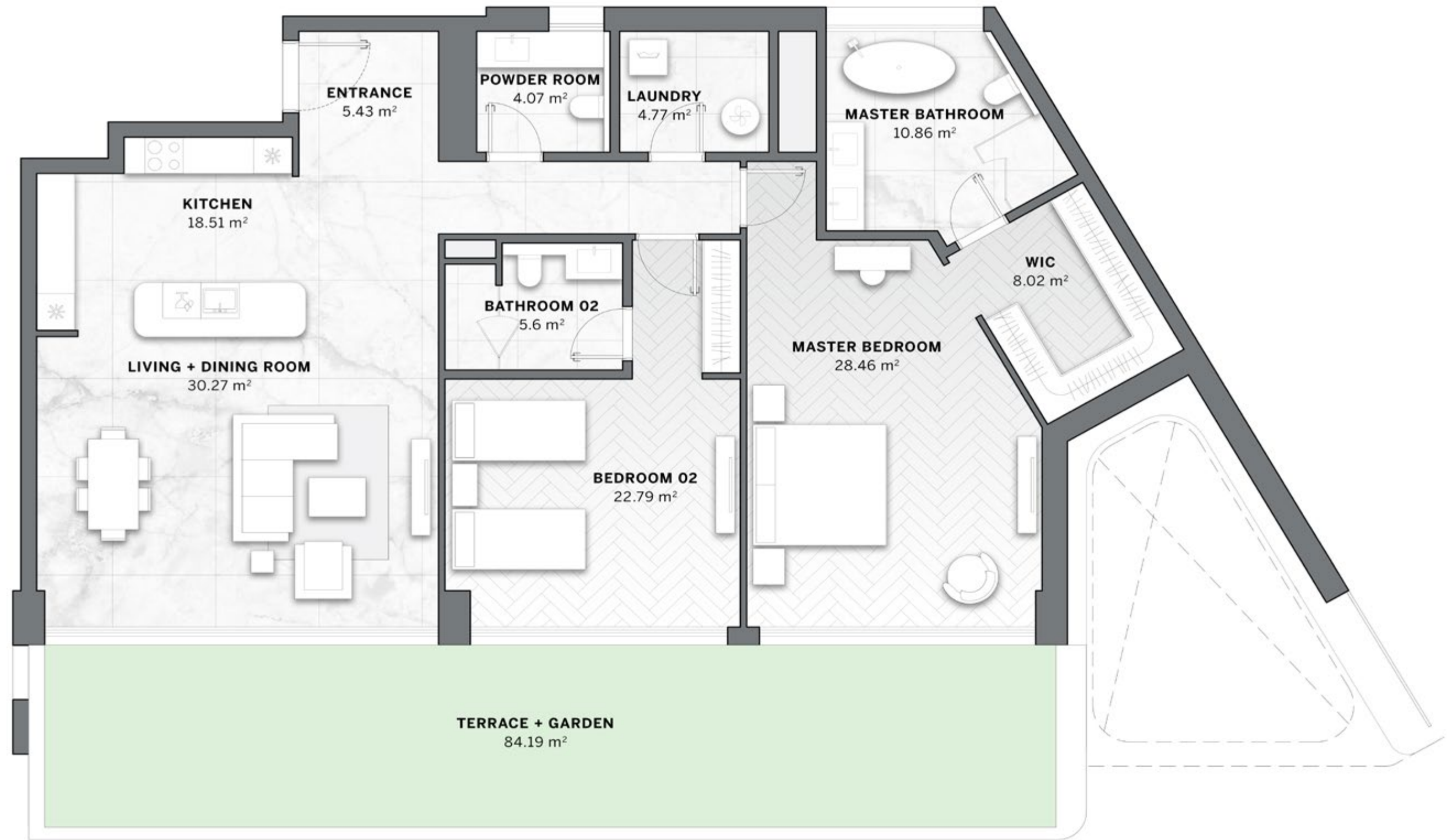


SECOND FLOOR



2 BEDROOMS
TYPE - B -

RESIDENCES WITH
CASCADING PRIVATE
GARDENS

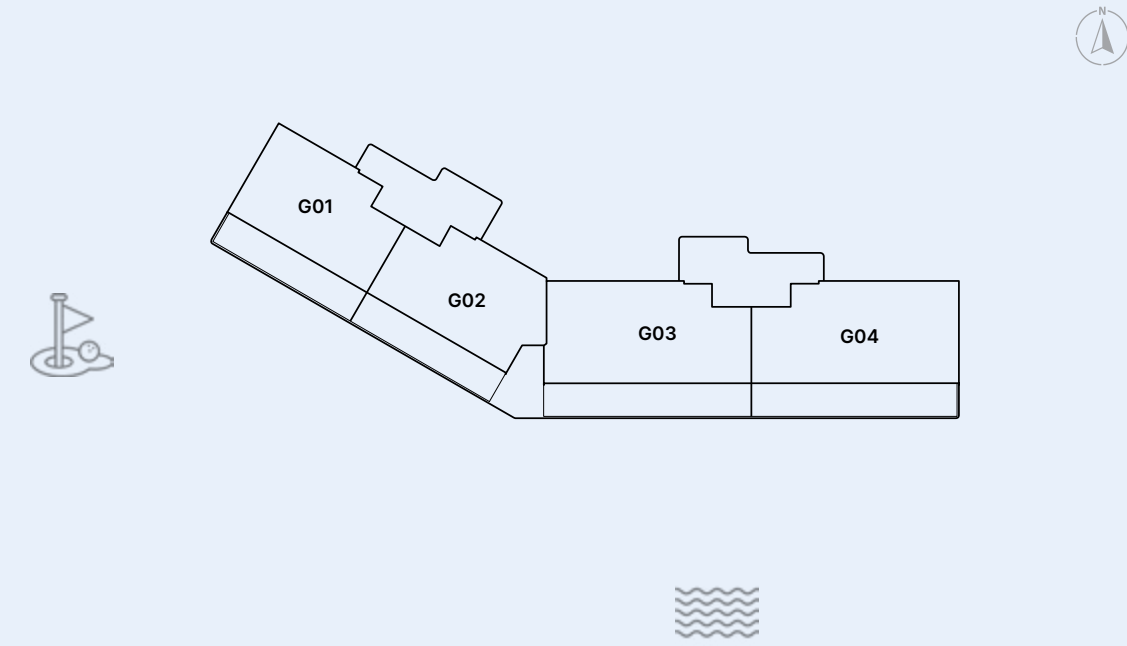


RESIDENCE (m ²)		TOTAL AREA (m ²)		PARKING	
Internal Built up Area	164.34	Total Built up Area	272.14	Space	1
GF Garden Area	84.19	<i>(incl. common area)</i>			
Common Built up Area	23.61				

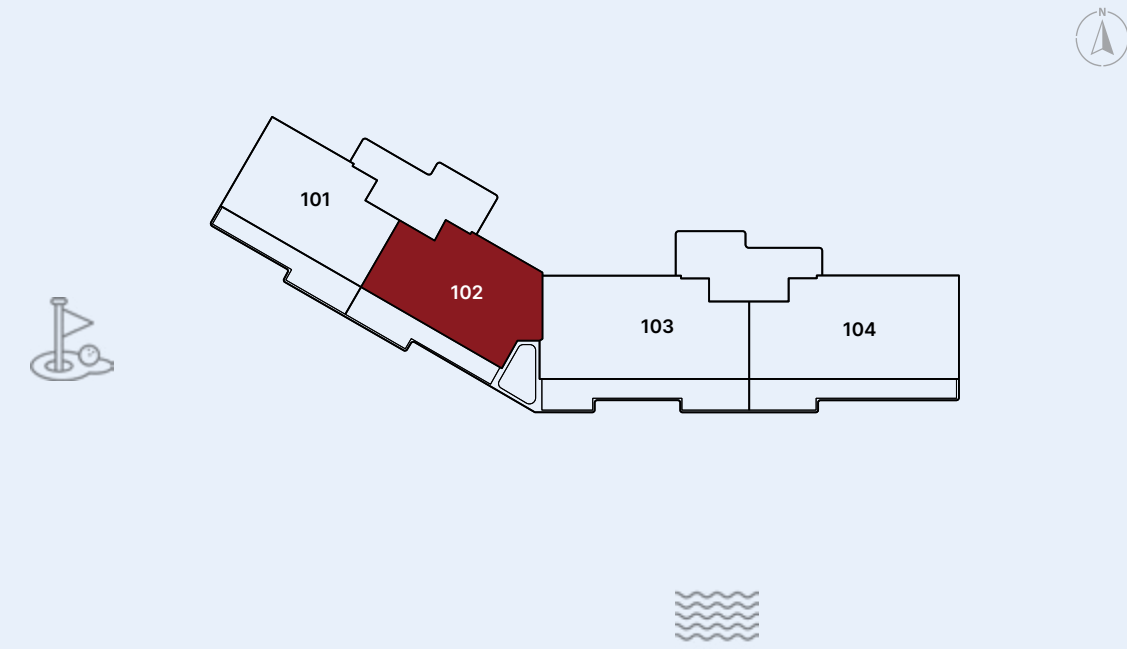
Disclaimer:
All pictures, plans, layouts, information, data and details included in this brochure are indicative only and may change at any time up to the final 'as built' status in accordance with final designs of the project, regulatory approvals and planning permissions. All accessories and interior finishes such as wallpaper, chandeliers, furniture, electronics, white goods, curtains, hard and soft landscaping, pavements, features, gym, and other elements displayed in the brochure, or between the plot boundary, are not part of the unit and are shown for illustrative purposes only.

2 BEDROOMS
TYPE - B -

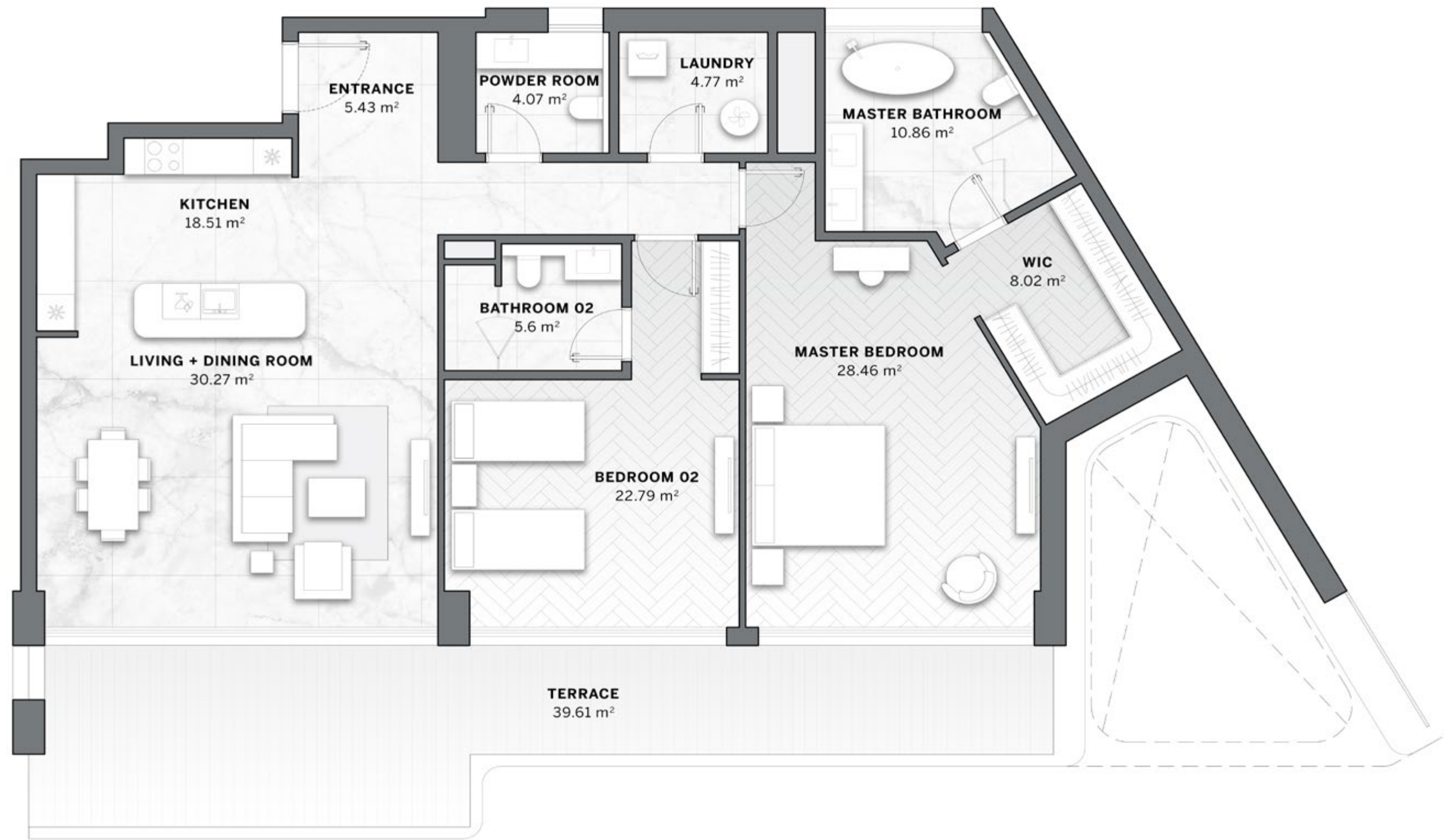
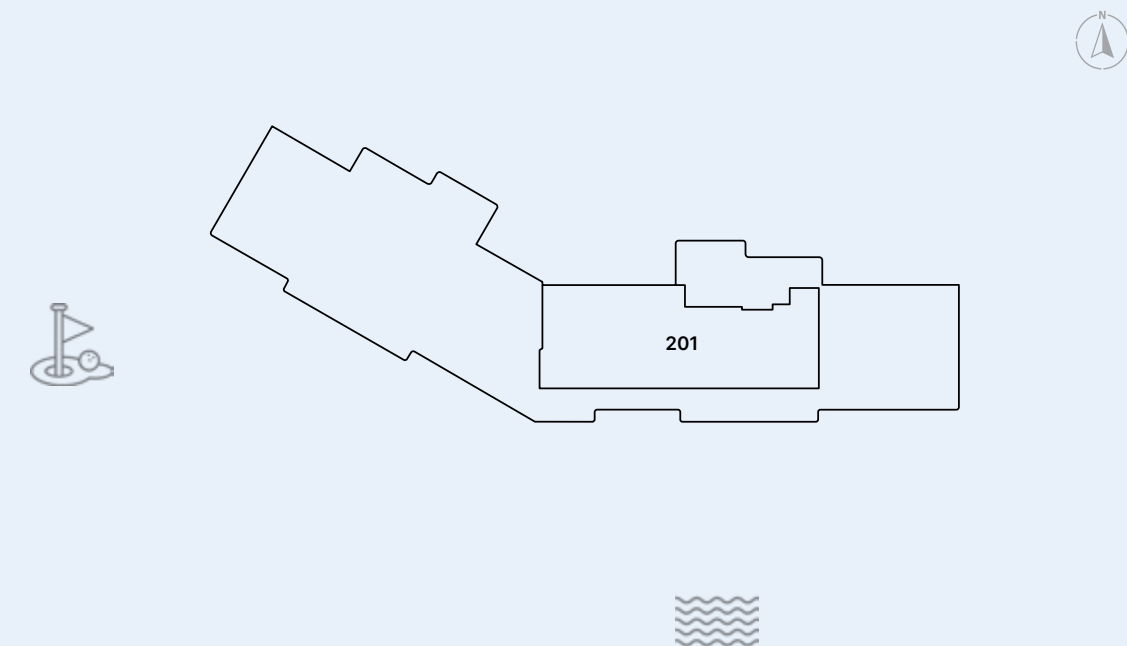
GROUND FLOOR



FIRST FLOOR



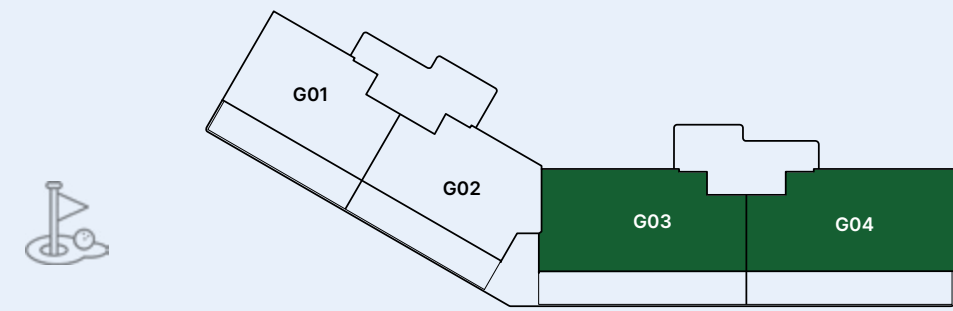
SECOND FLOOR



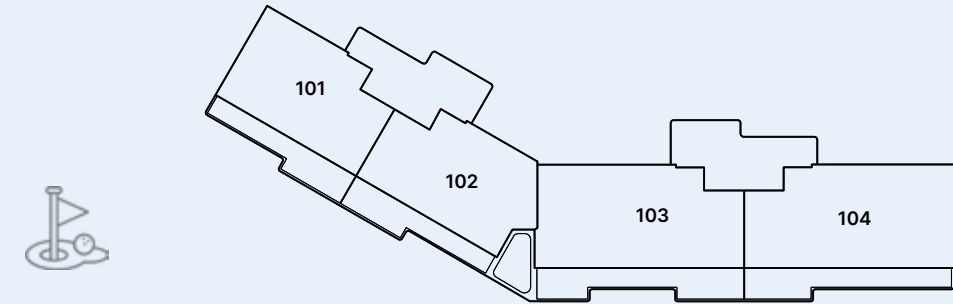
RESIDENCE (m ²)		TOTAL AREA (m ²)		PARKING	
Internal Built up Area	164.34	Total Built up Area	227.56	Space	1
Terrace Built up Area	39.61	<i>(incl. common area)</i>			
Common Built up Area	23.61				

Disclaimer:
 All pictures, plans, layouts, information, data and details included in this brochure are indicative only and may change at any time up to the final 'as built' status in accordance with final designs of the project, regulatory approvals and planning permissions. All accessories and interior finishes such as wallpaper, chandeliers, furniture, electronics, white goods, curtains, hard and soft landscaping, pavements, features, gym, and other elements displayed in the brochure, or between the plot boundary, are not part of the unit and are shown for illustrative purposes only.

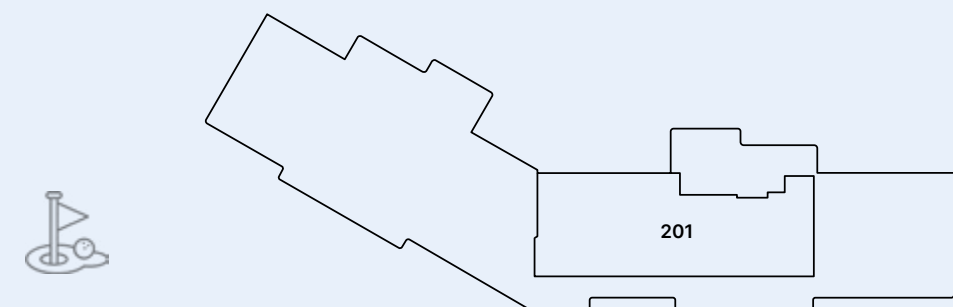
GROUND FLOOR



FIRST FLOOR

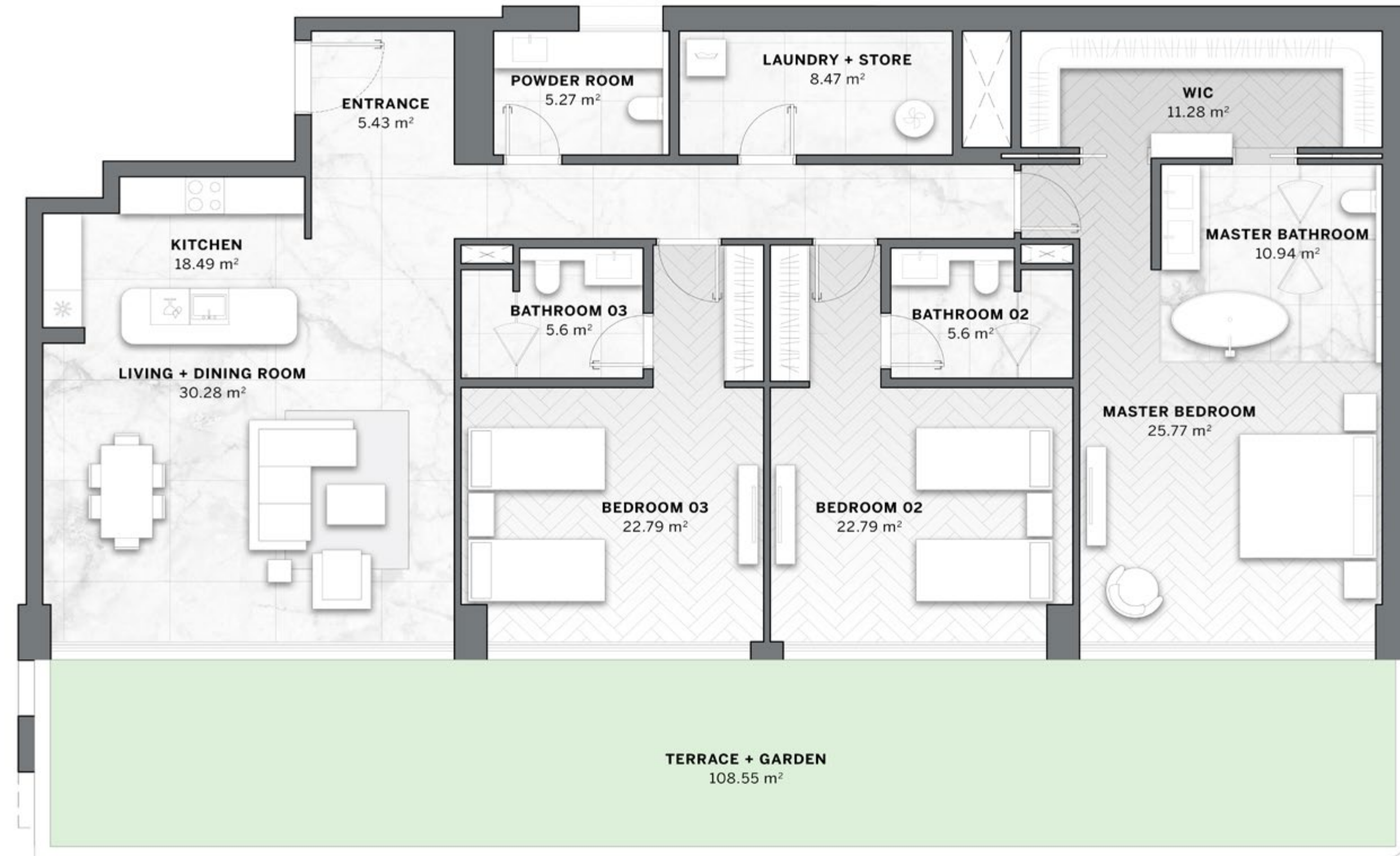


SECOND FLOOR



3 BEDROOMS TYPE - A -

RESIDENCES WITH
CASCADING PRIVATE
GARDENS



RESIDENCE (m ²)	
Internal Built up Area	208.11 - 209.95
GF Garden Area	108.55 - 147.5
Common Built up Area	29.90 - 30.17

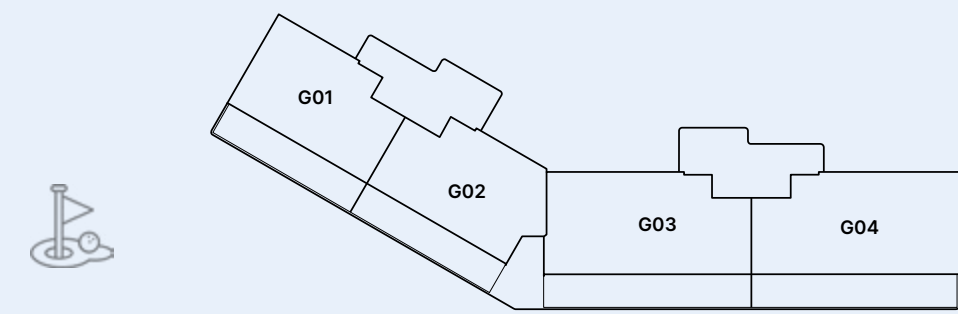
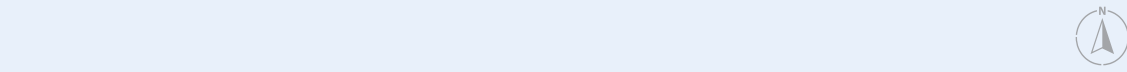
TOTAL AREA (m ²)	
Total Built up Area	348.67 - 385.51
<i>(incl. common area)</i>	

PARKING	
Space	2

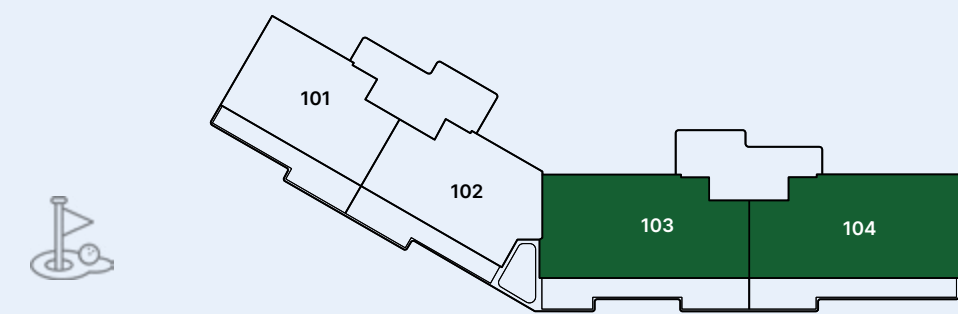
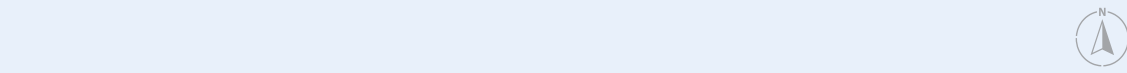
Disclaimer:
All pictures, plans, layouts, information, data and details included in this brochure are indicative only and may change at any time up to the final 'as built' status in accordance with final designs of the project, regulatory approvals and planning permissions. All accessories and interior finishes such as wallpaper, chandeliers, furniture, electronics, white goods, curtains, hard and soft landscaping, pavements, features, gym, and other elements displayed in the brochure, or between the plot boundary, are not part of the unit and are shown for illustrative purposes only.

3 BEDROOMS
TYPE - A -

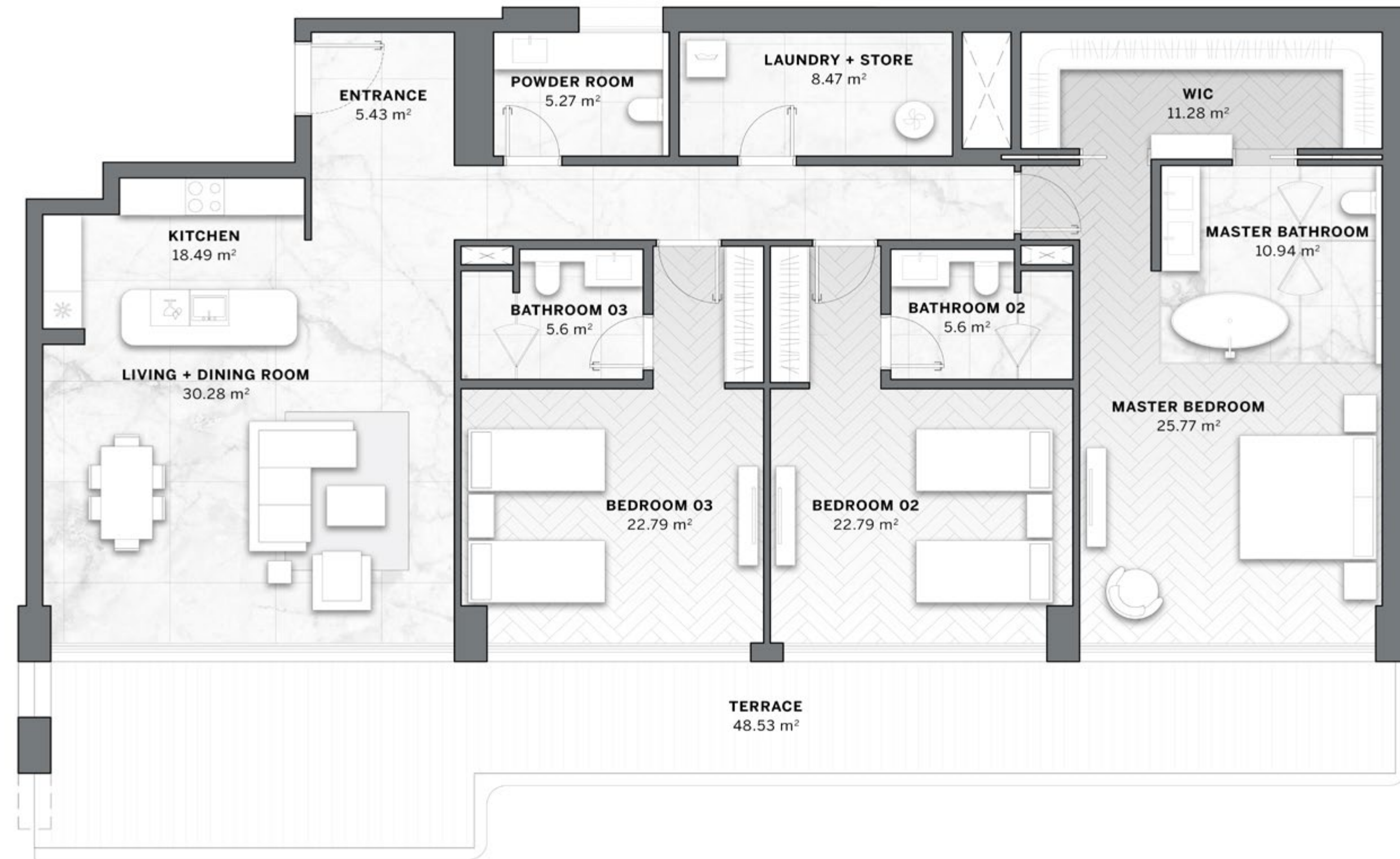
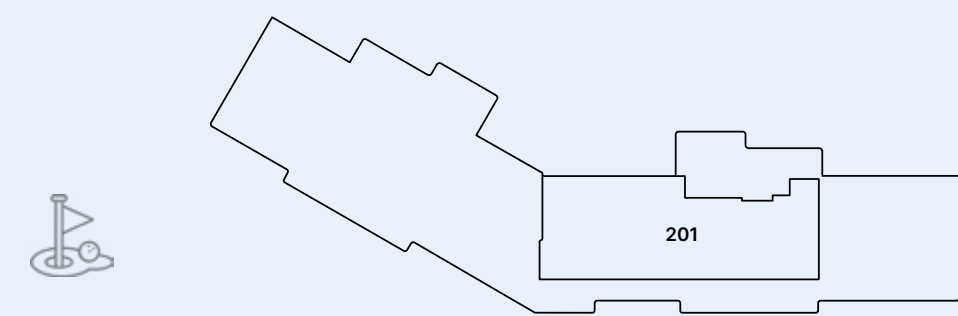
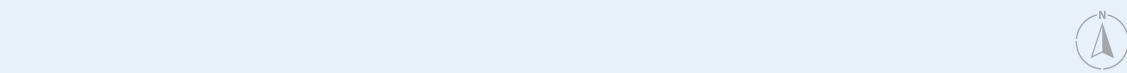
GROUND FLOOR



FIRST FLOOR



SECOND FLOOR



RESIDENCE (m ²)	
Internal Built up Area	208.11 - 209.95
Terrace Built up Area	48.53 - 54.56
Common Built up Area	29.90 - 30.17

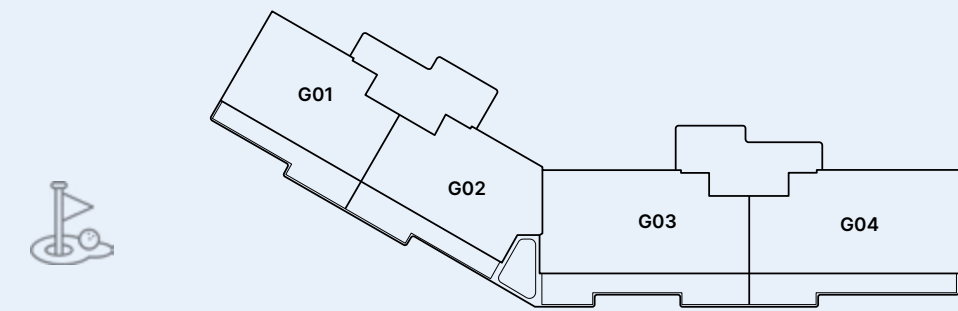
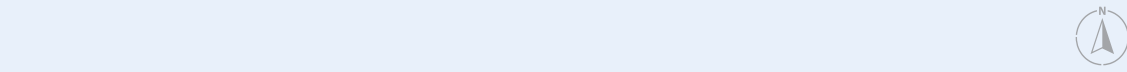
TOTAL AREA (m ²)	
Total Built up Area	288.65 - 292.57
<i>(incl. common area)</i>	

PARKING	
Space	2

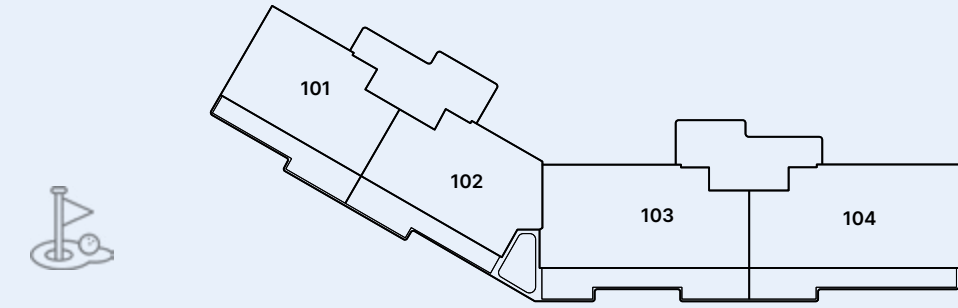
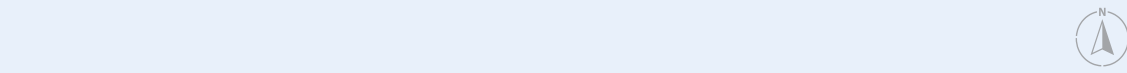
Disclaimer:
 All pictures, plans, layouts, information, data and details included in this brochure are indicative only and may change at any time up to the final 'as built' status in accordance with final designs of the project, regulatory approvals and planning permissions. All accessories and interior finishes such as wallpaper, chandeliers, furniture, electronics, white goods, curtains, hard and soft landscaping, pavements, features, gym, and other elements displayed in the brochure, or between the plot boundary, are not part of the unit and are shown for illustrative purposes only.

4 BEDROOMS TYPE - A -

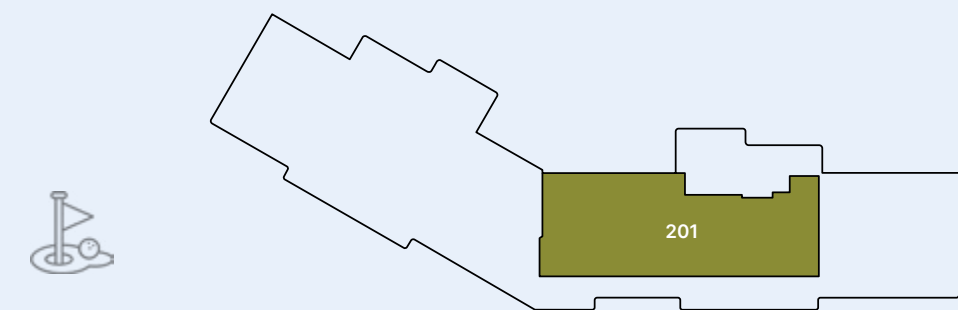
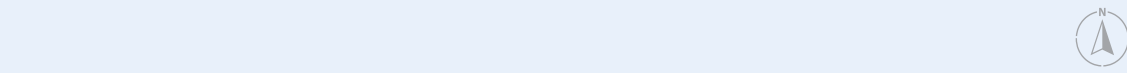
GROUND FLOOR



FIRST FLOOR



SECOND FLOOR



RESIDENCE (m²)

Internal Built up Area	269.51
Terrace Built up Area	244.95
Common Built up Area	38.73

TOTAL AREA (m²)

Total Built up Area	553.19
---------------------	--------

PARKING

Space	2
-------	---

Disclaimer:
All pictures, plans, layouts, information, data and details included in this brochure are indicative only and may change at any time up to the final 'as built' status in accordance with final designs of the project, regulatory approvals and planning permissions. All accessories and interior finishes such as wallpaper, chandeliers, furniture, electronics, white goods, curtains, hard and soft landscaping, pavements, features, gym, and other elements displayed in the brochure, or between the plot boundary, are not part of the unit and are shown for illustrative purposes only.

DARGLOBAL

Listed on the London Stock Exchange

Established in 2017 to upend the global luxury real estate market, DarGlobal combines experience and innovation to deliver the highest quality properties. World-class architects curate DarGlobal's homes that are modelled by renowned design icons; each DarGlobal home is built with the highest quality materials and maintained by experts within the field.

DarGlobal believes there is no better investment than an investment in luxury and takes pride in choosing the best-in-class locations and properties to provide lucrative investment opportunities for a distinct clientele.

Building on the legacy of the largest real estate company in the region.

—
9
offices in different cities worldwide

—
29
years of experience

—
15,300+
residential units delivered

—
8.6 Bn
USD in assets*

—
500,000 sqm
of commercial space

* Combined assets of DarGlobal and Dar Al Arkan as of 31 March, 2023

OUR OFFICES

DARGLOBAL

MARBELLA, SPAIN

Marbella Club Golden Mile, Av.
Bulevar Príncipe Alfonso
de Hohenlohe, Marbella 29602,
Málaga, Spain
T +34 952 68 76 80

DOHA, QATAR

Malibu Building,
Lusail Entertainment City,
Doha, Qatar
T +974 800 3536

DUBAI, UAE

Jumeirah Emirates Towers
30th Floor, Sheikh Zayed Road.
PO Box 2523, Dubai,
United Arab Emirates
T +971 4 247 8999

MUSCAT, OMAN

Royal Opera House Muscat Shatti
Al Qurum, Muscat,
Sultanate of Oman
T +968 2270 2777

LONDON, UK

50 Hans Crescent,
Knightsbridge, London,
SW1X 0NA, United Kingdom
T +44 7875 495156

For more information on
Marea, interiors by Missoni
please call +34 952 68 76 80



DARGLOBAL

DARGLOBAL.CO.UK

Disclaimer: All pictures, plans, layouts, information, data and details included in this brochure are indicative only and may change at any time up to the final 'as built' status in accordance with final designs of the project, regulatory approvals and planning permissions. All accessories and interior finishes such as wallpaper, chandeliers, furniture, electronics, white goods, curtains, hard and soft landscaping, pavements, features, gym, and other elements displayed in the brochure, or between the plot boundary, are not part of the unit and are shown for illustrative purposes only.